

# ExsaBay® Xtreme Compact

LED Linear High Bay | Selectable CCT



## Key Features

- Energy-efficient LED high bay solution to replace legacy fluorescent or HID systems.
- Selectable CCT via a switch in the field.
- Compact form simplifies handling during installation and maximizes spacing.
- Modular design accommodates output up to 72,600 lumens.

## Electrical

- 120-277V or 277-480V; 50/60Hz input.
- Power Factor: >0.9; THD: <20%
- 0-10V dimming standard.
- 6kV/3kA surge protection standard.
- Operating temperature: -40°C to 50°C (-40°F to 122°F)

## Mounting

- 40" chain and v-hooks included for suspended installation.
- Surface and pendant mount kit accessories available (sold separately).

## Construction

- Lightweight aluminum extrusion housing maximizes durability and is designed to optimize thermal management.
- Impact-resistant polycarbonate matte lens.
- Sensor, battery backup, and wire guard accessories available.

## Optics

- Industry-leading LEDs with selectable CCT via switch in the field: 4000K and 5000K (minimum 80 CRI).
- Lumen Maintenance: 167,000 hours (L70).<sup>1</sup>
- Choice of lens optics that are designed to output specialized light distribution to meet application requirements.

## Warranty

- Backed by US LED's industry-leading Ten-Year Warranty.

Project	Date
---------	------

Catalog Number	Type
----------------	------

## Product Performance Summary

<b>Lumen Output</b>	Up to 72,600 lumens
<b>Efficacy</b>	Up to 165 LPW
<b>CRI</b>	≥ 80 CRI
<b>Available CCT</b>	Selectable CCT: 4000K & 5000K
<b>Warranty</b>	Ten-Year Warranty

## Product Overview

Introducing the ExsaBay® Xtreme Compact (EBXC1) - US LED's advanced high bay solution that offers exceptional versatility and lighting performance to warehouses and distribution centers. The EBXC1 is designed to be lightweight yet robust, making it easy to handle during installation and maximizing space utilization in areas with limited clearance. This high bay solution offers selectable CCT options and outputs up to 72,600 lumens, with multiple mounting options to meet the needs of industrial settings. The ExsaBay Xtreme Compact high bay is the perfect solution to guide your business towards a brighter, more sustainable future with exceptional efficiency.

## Product Applications

- Warehouses
- Industrial Facilities
- Manufacturing Facilities
- Storage Facilities
- Gymnasiums
- Airport Hangars

## Product Certifications

- UL Listed; Complies with UL 1598 and CSA 22.2
- Suitable for Indoor Damp Locations
- DLC Premium Listed<sup>2</sup>
- RoHS Compliant



Example: EBXC1-1-UNVL-90-SCCT-200-N-N

## Ordering Information

EBXC1	Series	Variant	Input Voltage <sup>3</sup>	Optics <sup>4</sup>	Selectable CCT	Model	Sensor	Battery Backup <sup>5</sup>
	1	Standard	UNVL 120-277V	65 65°	SCCT Selectable CCT: 4000K & 5000K	90	Y Motion Sensor	Y Yes
			UNVH 277-480V	90 90°		150	D Daylight Harvesting Sensor	N No
						188	Z Zhaga Receptacle For Casambi-Enabled Controls	
						200		
						220		
						255	N No Sensor	
						300		
						375		
						440		

Accessories	
30260	10' Aircraft Cable Mount Kit
30025	20' Aircraft Cable Mount Kit
EBXC1-SM	Surface Mount Kit
EBXC1-PM	Pendant Mount Kit (Models 90-375)
EBXC1-PM2	Pendant Mount Kit (Model 440 Only)
EBXC1-WG	Wire Guard
PHB12-EM-LV-25W	Battery Backup 120-347V
PHB12-EM-HV-20W	Battery Backup 480V

1. Product 'lifetimes' refer to the LED light engine, not the power source, and are based on the Illuminating Engineering Society's TM21 Projected Lumen Maintenance methodology at a 25°C/77°F ambient temperature. Lifetimes are a guide for expected LED degradation and not a warranty or predictive of their actual life, which is affected by ambient temperatures and other factors.  
 2. The 90W UNVH model is not DLC listed.  
 3. Daylight harvesting sensor is not compatible with high voltage [UNVH] option.  
 4. 300W, 375W, and 440W models are only available with the 90° lens option.  
 5. EBXC1 will be pre-wired for battery backup option. Requires PHB12-EM-LV-25W (sold separately) and must be set up at the time of the EBXC1 installation.

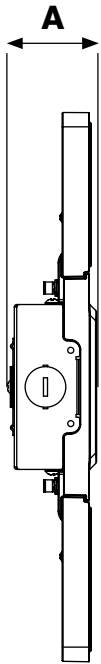
# ExsaBay® Xtreme Compact

LED Linear High Bay | Selectable CCT

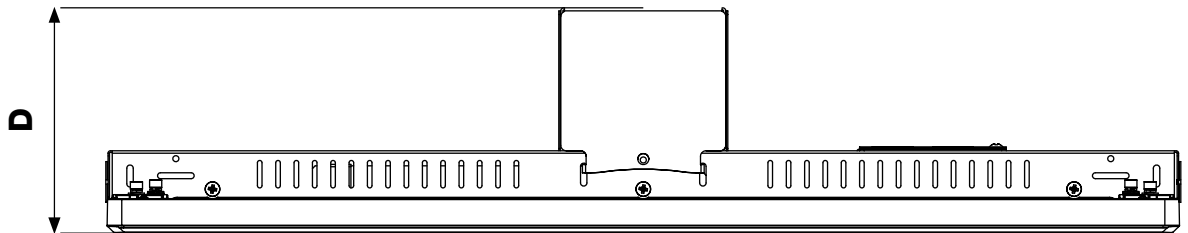


## Dimensions

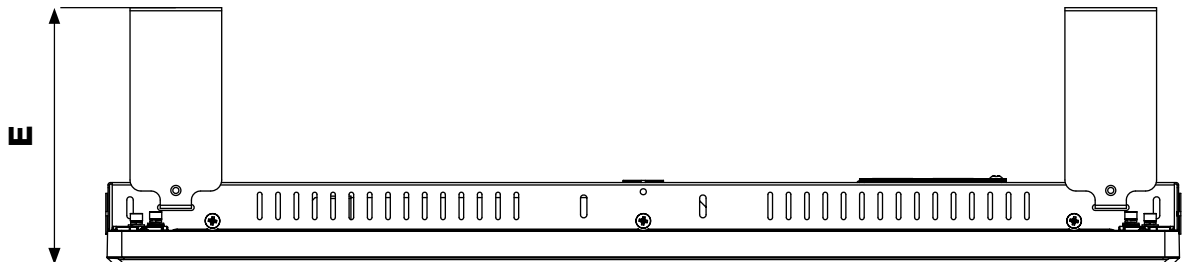
Model	A	B	C	D	E	Net Weight
90W / 150W / 188W	1.77 in. [45mm]	18.11 in. [460mm]	11.81 in. [300mm]	4.84 in. [123mm]	5.66 in. [144mm]	5.06 lbs. (2.3 kg)
200W / 220W / 255W	1.77 in. [45mm]	23.03 in. [585mm]	11.81 in. [300mm]	4.84 in. [123mm]	5.66 in. [144mm]	7.92 lbs. (3.6 kg)
300W / 375W / 440W	2.00 in. [51mm]	46.06 in. [1170mm]	12.59 in. [320mm]	4.84 in. [123mm]	5.66 in. [144mm]	12.8 lbs. (5.8 kg)



**EBXC1-PM**  
Pendant Mount Kit



**EBXC1-SM**  
Surface Mount Kit



# ExsaBay® Xtreme Compact

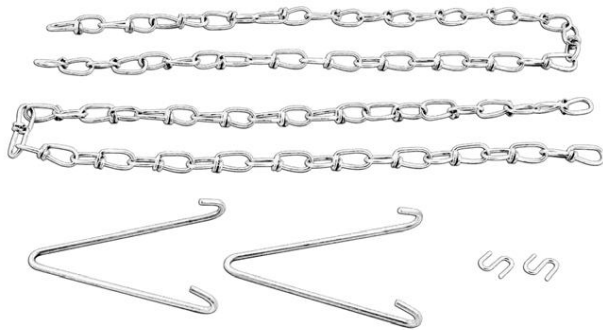
LED Linear High Bay | Selectable CCT



## Performance Data

Model	CCT	Optic	System Level Power	Delivered Lumens	Efficacy	L70 Calculated Life
EBXC1-1-UNVL-90-SCCT-90-N-N	5000K	90°	90W	14,850	165 LPW	167,000 hours
EBXC1-1-UNVL-90-SCCT-150-N-N	5000K	90°	150W	24,750	165 LPW	167,000 hours
EBXC1-1-UNVL-90-SCCT-188-N-N	5000K	90°	188W	31,020	165 LPW	167,000 hours
EBXC1-1-UNVL-90-SCCT-200-N-N	5000K	90°	200W	33,000	165 LPW	167,000 hours
EBXC1-1-UNVL-90-SCCT-220-N-N	5000K	90°	220W	36,300	165 LPW	167,000 hours
EBXC1-1-UNVL-90-SCCT-255-N-N	5000K	90°	255W	42,074	165 LPW	167,000 hours
EBXC1-1-UNVL-90-SCCT-300-N-N	5000K	90°	300W	49,500	165 LPW	167,000 hours
EBXC1-1-UNVL-90-SCCT-375-N-N	5000K	90°	375W	61,875	165 LPW	167,000 hours
EBXC1-1-UNVL-90-SCCT-440-N-N	5000K	90°	440W	72,600	165 LPW	167,000 hours

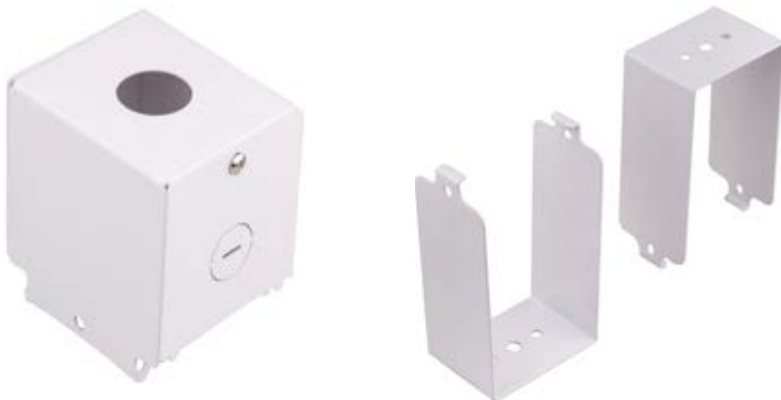
## Mounting Accessories



(2) 40" Chains and V-Hooks  
Suspension Mounting (Included)

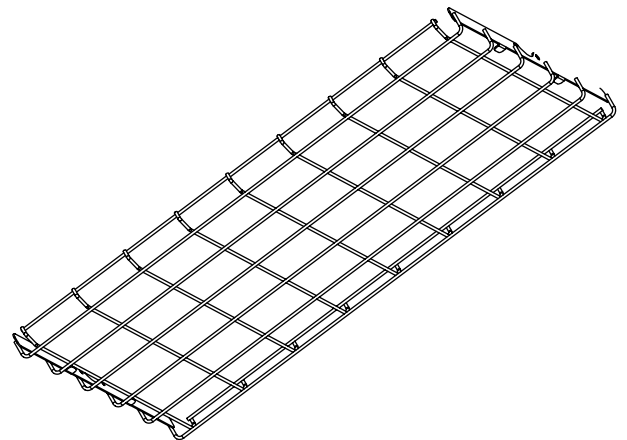


**30260** - 10 ft. Aircraft Cable Mounting Kit  
**30025** - 20 ft. Aircraft Cable Mounting Kit  
(Sold Separately)



**EBXC1-PM**  
Pendant Mount Kit  
(Sold Separately)

**EBXC1-SM**  
Surface Mount Kit  
(Sold Separately)



**EBXC1-WG**  
Wire Guard  
(Sold Separately)

# ExsaBay® Xtreme Compact

LED Linear High Bay | Selectable CCT



## Sensor Options



### Motion Sensor [Option Y] Specifications

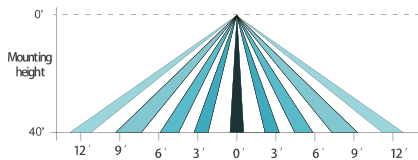
Operating Voltage	12±2V DC
Operating Current	30mA
Output	DIM 0-10V
Stand-By Power	<0.5W
Detection Angle	360°
Mounting Height	≤40ft.
Detection Range	Radius, 6.58-13.12ft.
Operating Temperature	-30°C to 60°C (-22°F to 140°F)
IP Rating	IP65



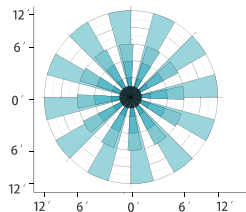
### Daylight Harvesting Sensor [Option D] Specifications

Operating Voltage	120-480V
Operating Current	25mA
Output	DIM 0-10V
Stand-By Power	<0.5W
Detection Angle	360°
Mounting Height	≤40ft.
Detection Range	Radius, 26.2 ft.
Operating Temperature	-40°C to 70°C (-40°F to 158°F)

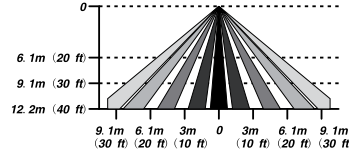
Side View



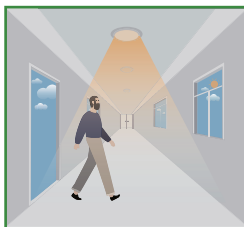
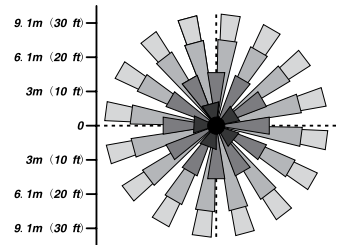
Top View



Side View



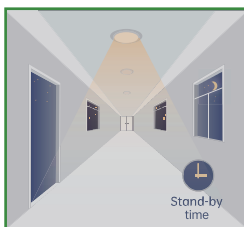
Top View



The sensor turns the light on when motion is detected.



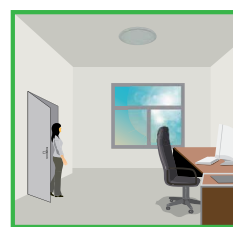
The sensor keeps the light on for a hold time after the motion has finished.



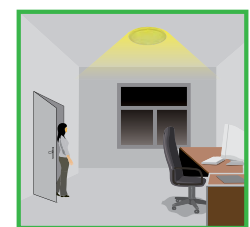
After the hold time, the sensor dims light to standby dimming level for preset time.



The sensor turns off the light automatically after the standby time when there's no motion detected.



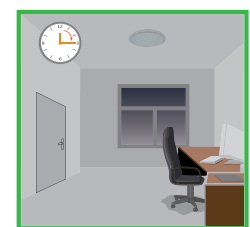
With sufficient natural light, the light does not switch on when presence is detected.



With insufficient natural light, the sensor switches the light on automatically when a person enters the area. The light doesn't switch off when someone is present.



When a person leaves, the light dims to preset standby level (0/10%/20%/30%) after the hold time.



The light turns off automatically after the dimming time has elapsed.

# ExsaBay® Xtreme Compact

LED Linear High Bay | Selectable CCT



## Battery Backup

**PHB12-EM-LV-25W EBXC1 Battery Backup Kit | 25W | 120-347V**

**PHB12-EM-HV-20W EBXC1 Battery Backup Kit | 20W | 480V**

## Overview

UL Listed LED emergency driver that allows the same luminaire to be used for both normal and emergency operation. In the event of a power failure, the battery back-up switches to the emergency mode and operates the luminaire for 90 minutes.

## Key Features

- Suitable for 4W to 300W luminaire with external LED driver.
- LiFePO4 12.8V 4.8Ah battery pack.
- Constant power output.
- Deep discharge protection.
- Accessory test switch and charge indicator.
- Five-Year Warranty.

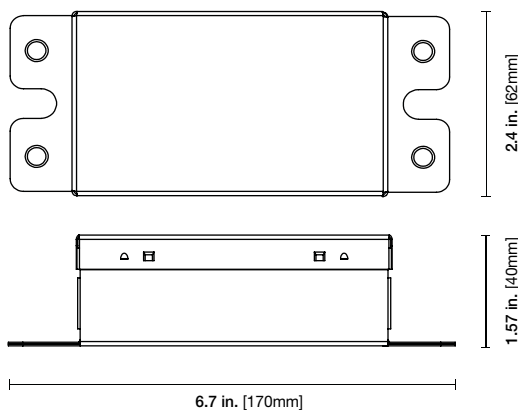


## Specifications

Rated Input Voltage	100-347V, 100-277VAC, 50/60Hz
Input Current	120mA Max
Input Power	8W Max
Power Factor	0.6 @100VAC, 0.5@347VAC
Output Wire L-out N-out (LED Load Input)	AC 6A Max
Output Voltage Range	DC25-54V, 60V max; 90-300V, 350V max.
Output Voltage (Emergency Mode)	4, 9, 16, 25W, Constant Power
Recharge Current	0-500mA
Recharge Time	24-48 Hours
Discharge Time	90 Minutes
Maximum Casing Temperature	80°C (176°F)
Ambient Operating Temperature	0°C to 60°C (32°F to 140°F)
Service Life	50,000 Hours
RFI/EMI	FCC



## Battery Pack Dimensions



## Emergency Driver Dimensions

