

LED LIGHTING FOR STORAGE FACILITIES

New Construction & Retrofit Specification Guide





INSIDE STORAGE UNITS

Location:	Inside Storage Units - Retrofit & New Construction		
Manufacturer:	US LED		
Description:	9" Round LED Mini Panel Ceiling Light with Selectable Wattage and Integrated Occupancy/Photocell Sensor		
Model Number:	SCL1-9-UNVL-10-50-WH		
Lumens:	1,213-1,987	Wattage:	10-18
L70 Lifetime:	>30,000 hrs.		
Warranty:	Ten-Year Warranty		



STORAGE HALLWAYS

Location:	Storage Area Hallways - Suspended Mount		
Manufacturer:	US LED		
Description:	LED Linear Strip with Selectable Wattage & CCT		
Model Number:	USL1-4-UNV-SCCT		
Lumens:	1,670-6,106	Wattage:	12-45
L70 Lifetime:	>60,000 hrs.		
Warranty:	Ten-Year Warranty		
Accessory:	30264 10 ft. Aircraft Cable Kit (Toggle)		
Additional Model:	USL1-4-UNV-SCCT JB LED Linear Strip with Junction Box and Power Cord Included		



STORAGE HALLWAYS ALT.

Location:	Storage Area Hallways
Manufacturer:	US LED
Description:	4' LED Single Lamp Fixture (Lamp Not Included)
Model Number:	LS-1-4
Warranty:	Three-Year Warranty
Additional Model Available:	LS-2-4 8' LED 2-Lamp Strip Fixture
Accessory:	30264 10 ft. Aircraft Cable Kit (Toggle)



2-LAMP LINEAR FIXTURE

Description:	4' LED Double Lamp Linear Fixture (Lamps Not Included)
Manufacturer:	US LED
Model Number:	TWS1
Warranty:	Three-Year Warranty



STANDARD FLUX LED LAMP

Description:	4' T8 LED Lamp - Type A+B Double-Ended		
Manufacturer:	US LED		
Model Number:	ST1-14-UNV-4-10A-50-GL-DE-T8		
Lumens:	1,750	Wattage:	10.5
L70 Lifetime:	>200,000 hrs.		
Warranty:	Ten-Year Warranty		



HIGH FLUX LED LAMP

Description:	4' T8 LED Lamp - Type B Double-Ended		
Manufacturer:	US LED		
Model Number:	ST1-4-UNV-4-27A-50-GL-DE		
Lumens:	4,250	Wattage:	27.9
L70 Lifetime:	>200,000 hrs.		
Warranty:	Ten-Year Warranty		



HALLWAYS - FAUX DOORS

Location:	Storage Hallways with Doors Visible to Outside		
Manufacturer:	US LED		
Description:	(1) 4' LED Single Lamp Fixture (Top/Bottom Door)		
Model Number:	Fixture: LS-1-4 Tube: ST1-4-UNV-4-27A-50-GL-DE		
Lumens:	4,250	Wattage:	27.9
L70 Lifetime:	200,000 hrs.		
Warranty:	Fixture: Three-Year Warranty LED Tube: Ten-Year Warranty		
Additional Model:	LS-2-4 8' LED 2-Lamp Strip Fixture		



HALLWAYS - FAUX DOORS ALT.

Location:	Storage Hallways with Doors Visible to Outside		
Manufacturer:	US LED		
Description:	ExsaBay® Xtreme Compact LED High Bay		
Model Number:	EBXC1-1-UNVL-90-SCCT-188-N-N		
Lumens:	31,020	Wattage:	188.0
L70 Lifetime:	>167,000 hrs.		
Warranty:	Ten-Year Warranty		



STAIRWELLS

Location:	Egress Stairways		
Manufacturer:	US LED		
Description:	LED Linear Strip with Selectable Wattage/CCT Dimmable Occ. Sensor, Photocell, Battery Back-Up		
Model Number:	USL1-4-UNV-SCCT BMS		
Lumens:	1,670-6,106	Wattage:	12-45
L70 Lifetime:	>60,000 hrs.		
Warranty:	Fixture: Ten-Year Warranty Sensor: Five-Year Warranty Battery Back-Up: Five-Year Warranty		



OFFICES - SURFACE MOUNT

Location:	Retail Office and Storage Areas - Surface Mount		
Manufacturer:	US LED		
Description:	L-Grid® Edge Xtreme XL Select 1x4 Flat Panel		
Model Number:	FTR3-14-UNVL-26-SCCT		
Lumens:	3,561-5,080	Wattage:	26-40
L70 Lifetime:	>50,000 hrs.		
Warranty:	Ten-Year Warranty		
Accessory:	FTR3-SMK14 Surface Mount Kit		



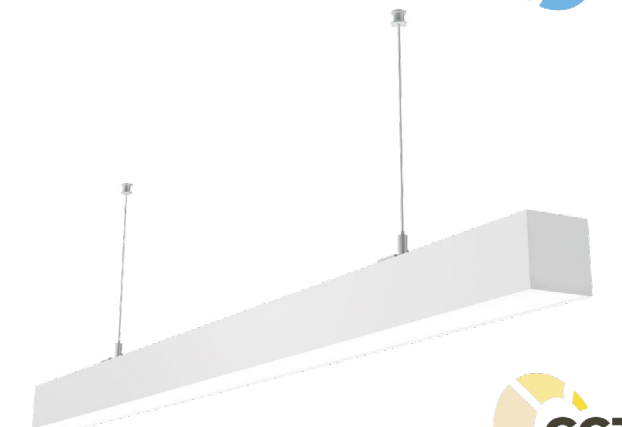
OFFICES - SURFACE MOUNT ALT.

Location:	Retail Office and Storage Areas - Surface Mount		
Manufacturer:	US LED		
Description:	LED Linear Strip with Selectable Wattage & CCT		
Model Number:	USL1-4-UNV-SCCT		
Lumens:	1,670-6,106	Wattage:	12-45
L70 Lifetime:	>161,000 hrs.		
Warranty:	Ten-Year Warranty		



OFFICES - OPEN CEILING

Location:	Retail Office Light - Open Ceiling Only		
Manufacturer:	US LED		
Description:	LAS1 Architectural Strip with Selectable CCT 4ft 120-277V White Linkable Down Light Only		
Model Number:	LAS1-4-30-UNVL-SCCT-WH-L-DO		
Lumens:	3,900	Wattage:	30.0
L70 Lifetime:	>50,000 hrs.		
Warranty:	Five-Year Warranty		
Accessory:	LAS-NC1 8' Suspended Mount Kit (No Power) LAS-PC1 8' Suspended Mount Kit (Power Cable)		



OFFICES - RECESSED MOUNT

Location:	Retail Office and Storage Areas - Recessed Only
Manufacturer:	US LED
Description:	L-Grid® Edge Xtreme XL Select 2x2 Flat Panel
Model Number:	FTR3-22-UNVL-26-SCCT
Lumens:	3,557-5,378 Wattage: 26-40
L70 Lifetime:	>50,000 hrs.
Warranty:	Five-Year Warranty
Additional Models Available:	FTR3-14-UNVL-26-SCCT L-Grid Edge Xtreme XL Select 1x4 FTR3-24-UNVL-32-SCCT L-Grid Edge Xtreme XL Select 2x4



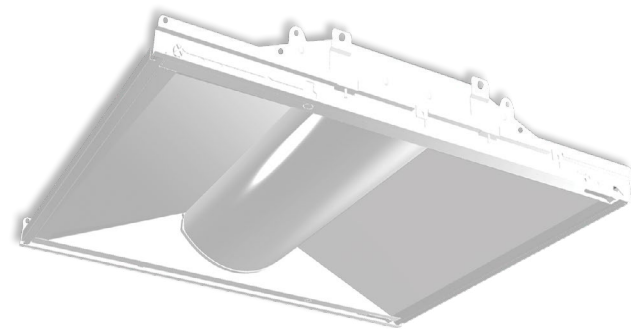
OFFICES - RECESSED MOUNT WITH EMERGENCY

Location:	Retail Office and Storage Areas - Recessed Only
Manufacturer:	US LED
Description:	L-Grid® Edge Xtreme XL Select 2x2 Flat Panel with Battery Back-Up
Model Number:	FTR3-22-UNVL-26-SCCT BBU
Lumens:	3,557-5,378 Wattage: 26-40
L70 Lifetime:	>50,000 hrs.
Warranty:	Five-Year Warranty



OFFICES - RECESSED MOUNT ALT.

Location:	Retail Office and Storage Areas - Recessed Only
Manufacturer:	US LED
Description:	TEG LED 2x2 Architectural Recessed Troffer
Model Number:	TEG1-1-22-UNVL-30-1-50
Lumens:	4,110 Wattage: 31.3
L70 Lifetime:	>161,000 hrs.
Warranty:	Ten-Year Warranty
Additional Models Available:	TEG1-1-14-UNVL-30-1-50 TEG LED 1x4 Recessed Troffer TEG1-1-24-UNVL-30-1-50 TEG LED 2x4 Recessed Troffer



OVER COUNTER & UNDER OVERHANG

Location:	Over Counter and Outdoor Under Overhang
Manufacturer:	US LED
Description:	LED Downlight - 6" Round
Model Number:	LTR4-6R-UNV-1-SCCT-WH
Lumens:	750-1,500 Wattage: 9-10
L70 Lifetime:	>60,000
Warranty:	Five-Year Warranty
Accessory:	EM-H25170-LBF Emergency Battery Back-Up



AWNING - 4 FT. SECTION

Location:	Awning - 4 ft. Section
Manufacturer:	US LED
Description:	TDXL2 Retrofit Kit 4 LED Double-Sided Modules Per Stick Mounting Brackets & Screws Included
Model Number:	TX2L-4-24-D-4-48-W
Lumens:	3,200 Wattage: 20.0
L70 Lifetime:	200,000 hrs.
Warranty:	Ten-Year Warranty
Accessory:	PSB-1-24-96 24V/96W Power Supply



LUMIDECK - 4 FT. SECTION

Location:	Lumideck - 4 ft. Section
Description:	SFAL LED Accent Lighting Kit 4 ft. Extrusion LED Tape Light and End Caps
Model Number:	SFAL-1-50-4-24
Lumens:	460 lumens/ft. CCT: 5000K
L70 Lifetime:	50,000 hrs.
Warranty:	Five-Year Warranty
Accessory:	PSB-1-24-96 24V/96W Power Supply



AWNING & LUMIDECK

Location:	Under Office Canopy - Power Supply
Manufacturer:	US LED
Description:	US LED Power Supply 24V/96W 120-277 Primary Input Voltage
Model Number:	PSB-1-24-96
Warranty:	Ten-Year Warranty



MAIN LOADING AREAS

Location:	Over Main Loading - Flush Mount to Canopy
Manufacturer:	US LED
Description:	1x1 Soffit EH w/ Drywall Flange Kit
Model Number:	GTR2-11EH-50-80-UNV2-S
Lumens:	2,250 Wattage: 23.5
L70 Lifetime:	>200,000 hrs.
Warranty:	Ten-Year Warranty
Accessory:	SSMK1 Surface Mount Kit DW-11 Recessed Mount Kit



WALL MOUNT DRIVE AISLE

Location:	Wall Mount Drive Aisle 40' O.C.	
Manufacturer:	US LED	
Description:	QubePAK3 LED Wall Pack	
Model Number:	DS-402U-3-UNVL-50-96-BZ	
Lumens:	5,320	Wattage: 40
L70 Lifetime:	146,000 hrs.	
Warranty:	Ten-Year Warranty	
Accessory:	WG Wire Guard	



WALL MOUNT DRIVE AISLE - ALT.

Location:	Wall Mount Drive Aisle 40' O.C. (Where Dark Sky Fixtures Are Required)	
Manufacturer:	US LED	
Description:	EcoNight3	
Model Number:	DSCO1-3-UNVL-50-96-BZ	
Lumens:	5,870	Wattage: 40
L70 Lifetime:	146,000 hrs.	
Warranty:	Ten-Year Warranty	



COVERED PARKING

Location:	Outdoor Covered Parking	
Manufacturer:	US LED	
Description:	Outdoor Parking Garage Canopy Light - Bronze	
Model Number:	QPXL1-1-75-UNVL-50-70-BZ	
Lumens:	11,440	Wattage: 77
L70 Lifetime:	>200,000 hrs.	
Warranty:	Ten-Year Warranty	



EXTERIOR FAUX STORAGE DOORS

Location:	Exterior Faux Storage Doors	
Manufacturer:	US LED	
Description:	Outdoor LED Flood Light - Dark Bronze	
Model Number:	LFL1-18-50-UNVL-3	
Lumens:	2,400	Wattage: 18
L70 Lifetime:	>200,000 hrs.	
Warranty:	Five-Year Warranty	
Accessory:	ARMSV24 Dark Bronze 2' Wall Mount Arm	



OUTDOOR AREA/SITE

Location:	Exterior Fixture for Pole of Building Mount	
Manufacturer:	US LED	
Description:	LED Area Light with Selectable CCT (5M Lens)	
Model Number:	RCAL1-30-SCCT-UNVL-1-5-10SP-Z5 300	
Lumens:	45,056	Wattage: 299.8
L70 Lifetime:	≥167,000 hrs.	
Warranty:	Ten-Year Warranty	
Accessories: (Specify Mount)	AM-B - Slip Fitter Mount (Bronze) DM-B - Adjustable Mount Square/Round Pole (Bronze) YM-B - Trunnion Mount (Bronze) ADM-B - 2 3/8" Round Tenon Mount (Bronze)	



OUTDOOR FLOOD

Location:	Exterior Fixture for Pole of Building Mount	
Manufacturer:	US LED	
Description:	LED Area Light with Selectable CCT (5M Lens)	
Model Number:	RCAL1-15-SCCT-UNVL-1-5-10SP-Z5 120	
Lumens:	17,963	Wattage: 119.6
L70 Lifetime:	≥167,000 hrs.	
Warranty:	Ten-Year Warranty	
Accessories: (Specify Mount)	AM-B - Slip Fitter Mount (Bronze) DM-B - Adjustable Mount Square/Round Pole (Bronze) YM-B - Trunnion Mount (Bronze) ADM-B - 2 3/8" Round Tenon Mount (Bronze)	



OUTDOOR FLOOD ALT.

Location:	Exterior Fixture for RV & Boat Parking Area	
Manufacturer:	US LED	
Description:	LED Flood Light	
Model Number:	QDXLR-120-50-UNVL-1-5-N-Z5	
Lumens:	15,000	Wattage: 125.0
L70 Lifetime:	≥125,000 hrs.	
Warranty:	Ten-Year Warranty	
Accessories: (Specify Mount)	Z1 - Adjustable Mount Square/Round Pole Z2 - Slip Fitter Mount Z3 - Trunnion Mount Z4 - 2 3/8" Round Tenon Mount	



EXIT SIGN

Description:	2-Sided Exit Sign with Battery Back-Up	
Model Number:	ESX1	
Voltage:	120-277V	Rating: Damp Location
Warranty:	Five-Year Warranty	



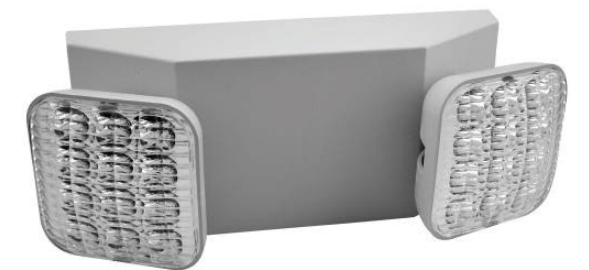
EXIT SIGN COMBO

Description:	LED Exit Sign with Two LED Emergency Lights	
Model Number:	ESEM-PC-UNVL-2-RC	
Voltage:	120-277V	Rating: Damp Location
Warranty:	Five-Year Warranty	



EMERGENCY LIGHT

Description:	Dual Head LED Emergency Light	
Model Number:	EM-PC-UNVL-2-RC	
Voltage:	120-277V	Rating: Damp Location
Warranty:	Five-Year Warranty	



EMERGENCY LED LAMP

Description:	4' T10 Emergency LED Lamp With Integrated Battery Back-Up	
Manufacturer:	US LED	
Model Number:	EMT1-2-UNV-4-15A-50-DE-T10	
Lumens:	2,800 (360 EM)	Wattage: 15
L70 Lifetime:	>50,000 hrs.	
Warranty:	Five-Year Warranty	



BATTERY BACK-UP

Description:	ACE LEDs Emergency LED Driver	
Model Number:	ACE-G10B-180CP	
Voltage:	120-277VAC	Operation Time: 90 minutes
Manufacturer Warranty:	Five-Year Warranty	



TIME CLOCK

Location:	Office	
Manufacturer:	Intermatic Inc.	
Description:	Astro-Timer	
Model Number:	ET8015C	
Voltage:	120-277V	Backup: 3-Year Battery
Warranty:	One-Year Warranty	



WALL SENSOR SWITCH

Location:	Office	
Manufacturer:	Leviton	
Description:	Ultrasonic/Infrared, Multi-Technology Wall Switch Sensor, No Neutral, 2400 sq. ft. Major & 400 sq. ft. Minor Motion Coverage, White	
Model Number:	OSSMT-GDW	
Voltage:	120-277V	Sensor Technology: Passive Infrared
Warranty:	Five-Year Warranty	



OCCUPANCY SENSOR (Line Voltage)

Location:	Hallway	
Manufacturer:	Acuity Brands	
Description:	Occupancy Sensor for Ceiling (Line Voltage)	
Model Number:	CMR-10	
Voltage:	120-277V	Sensor Technology: Passive Infrared (PIR)
Warranty:	Five-Year Warranty	

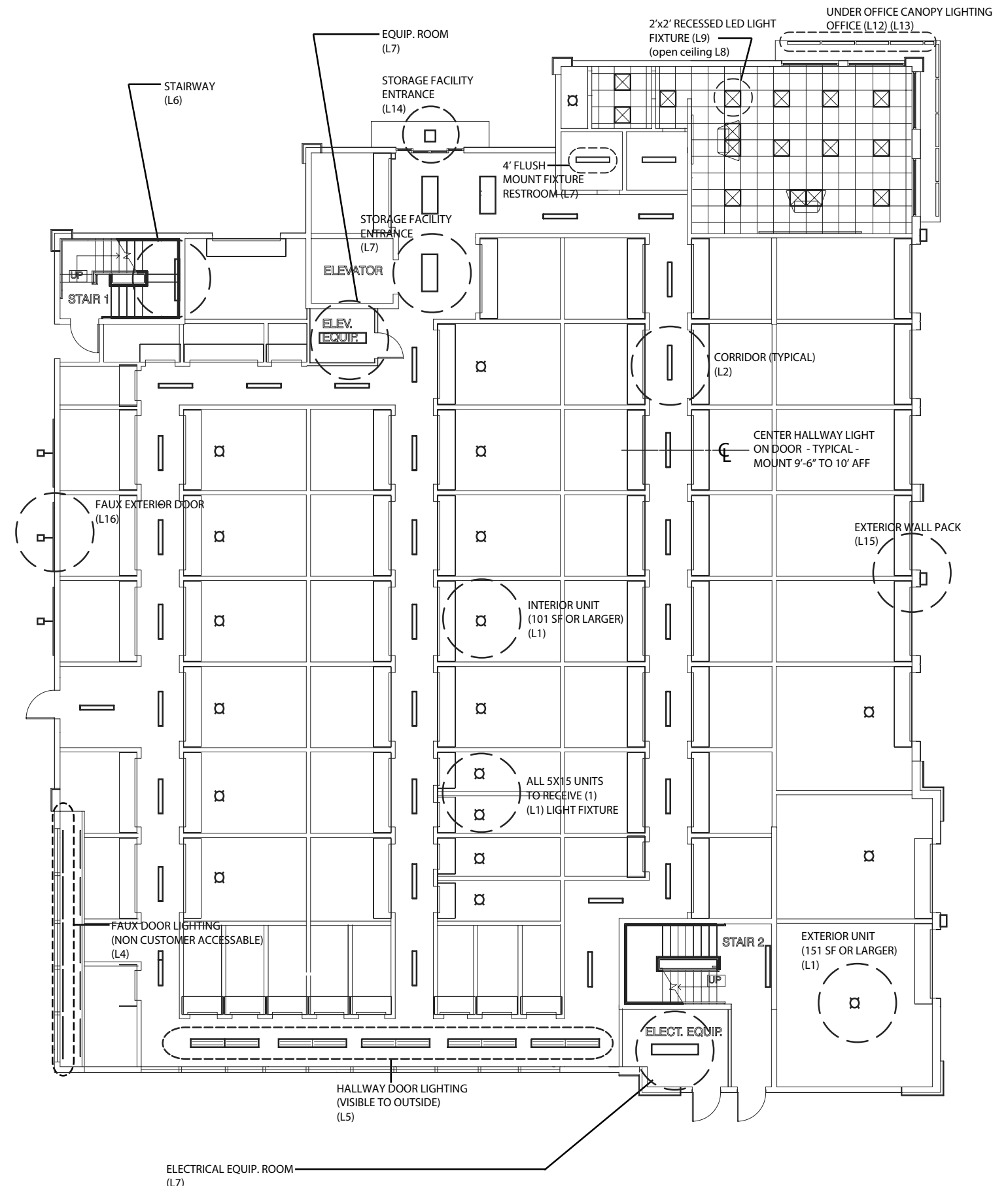


OCCUPANCY SENSOR (Line Voltage)

Location:	Hallway	
Manufacturer:	Acuity Brands	
Description:	Occupancy Sensor for Ceiling (Line Voltage)	
Model Number:	CMR-PDT-10	
Voltage:	120-277V	Sensor Technology: PIR and Microphonics
Warranty:	Five-Year Warranty	



EXAMPLE LAYOUT





Pole Mounts & RV/Boat Storage



Storage Unit Faux Doors



Storage Unit Hallways



Retail Office Interiors



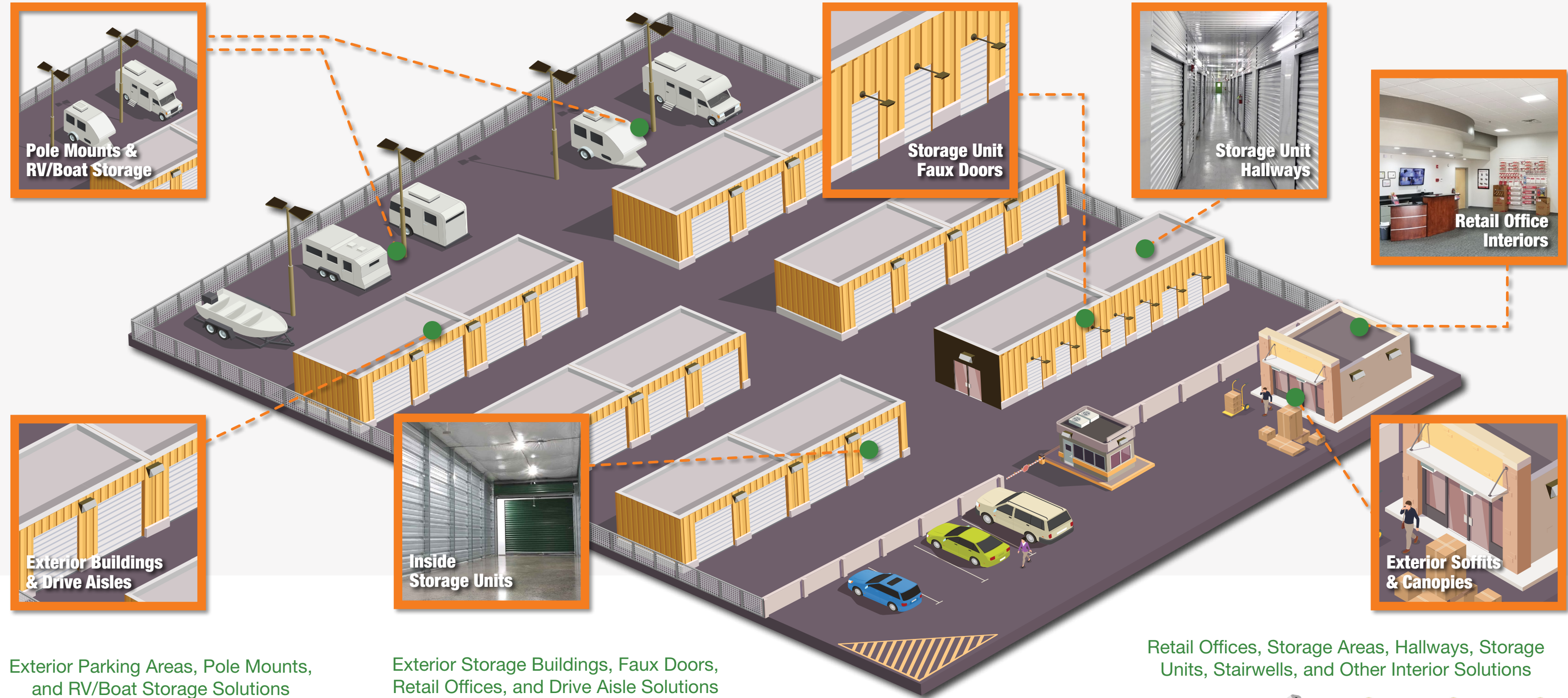
Exterior Buildings & Drive Aisles



Inside Storage Units



Exterior Soffits & Canopies



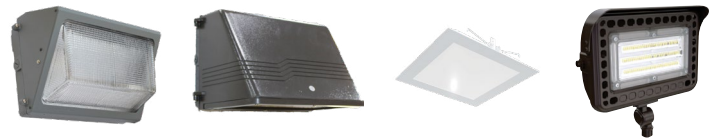
Exterior Parking Areas, Pole Mounts, and RV/Boat Storage Solutions

Exterior Storage Buildings, Faux Doors, Retail Offices, and Drive Aisle Solutions

Retail Offices, Storage Areas, Hallways, Storage Units, Stairwells, and Other Interior Solutions



	Right Choice Area Light (RCAL1)	QubePark XL Canopy Light (QPXL1)
Lumens	Up To 45,056 LM	Up To 11,440 LM
Wattages	120-300W	25-75W
Available CCT	3000K, 4000K or 5000K (Selectable)	4000K or 5000K
L70 Lifetime	≥167,000 Hours	200,000 Hours



	QubePAK3 Wall Pack (DS-402U-3)	EcoNight3 Wall Pack (DSCO1-3)	L-Grid 1x1 Soffit/Canopy (GTR2-11EH)	LFL Flood Light (LFL1)
Lumens	Up To 5,340 LM	Up To 5,870 LM	Up To 2,260 LM	Up To 2,400 LM
Wattages	30-40W	30-40W	24W	18W
Available CCT	3000K, 4000K or 5000K	3000K, 4000K or 5000K	3000K, 4000K or 5000K	3000K, 4000K or 5000K
L70 Lifetime	≥146,000 Hours	≥146,000 Hours	200,000 Hours	200,000 Hours

Emergency Lighting, Motion Sensors, & Time Clock Solutions Available By Request



	Round LED Mini Panel For Storage Units (SCL1)	LED Tubes - Single or Double-Ended	LED Linear Strip Light (USL1)	L-Grid Edge Xtreme XL Select Flat Panel (FTR3)	L-Trim SOL XLE Select Downlight (LTR4)	ExsaBay Xtreme Compact High Bay (EBXC1)
Lumens	Up to 1,987 LM	Up to 5,500 LM	Up To 6,106 LM	Up To 5,378 LM	Up to 1,500 LM	Up to 72,600 LM
Wattages	10-18W	10-42W	12-45W	26-40W (Selectable)	9-19W (Selectable)	90-440W
Available CCT	4000K or 5000K	3000K, 4000K or 5000K	3500K, 4000K or 5000K (Selectable)	3500K, 4000K or 5000K (Selectable)	3500K, 4000K or 5000K (Selectable)	4000K or 5000K (Selectable)
L70 Lifetime	>30,000 Hours	200,000 Hours	>60,000 Hours	>50,000 Hours	>60,000 Hours	≥167,000 Hours

**WE DO THE RIGHT THINGS,
THE RIGHT WAY,
AND ON TIME.**



USLED
Always the Right Choice!

www.USLED.com | 866-972-9191 | customerservice@usled.com

© US LED™ All Rights Reserved. For informational purposes only.
Not a warranty or specification. See USLED.com for product specifications, warranties, and terms & conditions.