

# TX2L | TDXL2 Retrofit Kit

## Sign Cabinet Lighting



**TDXL2**



### Key Features

- Ultra-long life LED modules are designed to deliver unparalleled lighting performance while maximizing spacing inside the cabinet.
- LED modules are mounted on an aluminum extrusion to simplify installation.
- Single or double-sided options are available; Ideal for 3"-18" from the sign cabinet face.

### Electrical

- 24VDC input.
- 0-10V dimming available via controller accessory (sold separately).
- Operating temperature: -40°C to 55°C (-40°F to 131°F)

### Mounting

- Aluminum extrusion designed to be installed into existing fluorescent sockets.
- Mounting set included with every extrusion. Set includes: (2) L-brackets, (2) Z-brackets, (1) interconnect bracket, and screws.

### Construction

- Modules are IP66 rated to prevent penetration of dust and moisture.
- Single-sided dimensions: 3.30"x1.61"x0.157"
- Double-sided dimensions: 5.59"x1.57"x0.307"
- Aluminum extrusion length is 4 ft. standard.
- Custom lengths available for special order. <sup>2</sup>

### Optics

- 170° beam angle for wide light distribution.
- Industry-leading LEDs with 3000K, 4000K, 5000K, & 6500K CCT (minimum 70 CRI).
- Lumen maintenance: 200,000 hours (L70) <sup>1</sup>

### Warranty

- Backed by US LED's industry-leading Ten-Year Warranty.

Project	Date
---------	------

Catalog Number	Type
----------------	------

### Product Performance Summary

Lumen Output	Up to 6,400 lumens <sup>2</sup>
Efficacy	Up to 160 LPW
CRI	≥ 70 CRI
Available CCT	3000K, 4000K, 5000K, and 6500K
Warranty	Ten-Year Warranty

### Product Overview

For easy and quick retrofits, US LED offers the TX2L retrofit kit featuring TDXL2 modules and convenient aluminum extrusion. The TDXL2 modules are secured with stainless steel screws to a high-grade aluminum extrusion to avoid future corrosion. The extrusions include a joining connector piece and clips for easy mounting. TX2L retrofit kits are custom assembled in Houston, Texas, with choices of length and modules to accommodate specific projects.

### Product Applications

- Single-Sided Sign Cabinets
- Double-Sided Sign Cabinets
- General Signage

### Product Certifications

- UL Recognized (USA/Canada)
- Suitable for Wet Locations
- IP66 Rated



### Ordering Information

Example: TX2L-1-24-S-3-48-W30

Series	Variant	Voltage	# Sides	Modules Per Stick	Length	CCT
1	T12 Replacement Length <sup>2</sup>	24 24VDC	S Single Sided	1 1 Module/Stick	48 48"	W30 3000K
	2 2 Modules/Stick					
2	Standard Length	24 24VDC	D Double Sided	3 3 Modules/Stick	48 48"	W40 4000K
				4 4 Modules/Stick		
				5 5 Modules/Stick		
				6 6 Modules/Stick		
				7 7 Modules/Stick		
				8 8 Modules/Stick		
						W50 5000K
						W 6500K

### TX2L Accessories (Sold Separately)

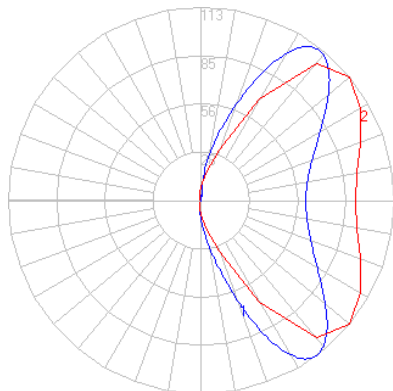
Part Number	Description
PSB-1-24-96	US LED Power Supply   24 V   96W
PS2-1-NA	Life Extender Power Supply Enclosure   Natural Galvanized
DCA-10-120	0-10V Dimming Controller   120W RoHS   Mark VII

1. US LED product 'Lifetimes' refer only to the LED light engine, not the power source, and are based on the Illuminating Engineering Society's TM21 Projected Lumen Maintenance methodology at a 25° C / 77° F ambient temperature. The lifetimes are solely meant to be a guide for expected LED degradation and not a warranty or predictive of their actual life, which can be affected by ambient temperatures and other factors.  
2. Custom lengths are special order. See "Special Order - Retrofit Kits" table on page 3.

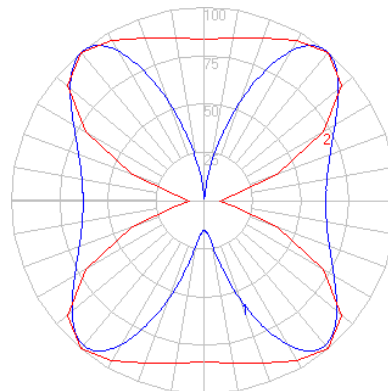
# TX2L | TDXL2 Retrofit Kit

## Sign Cabinet Lighting

### Performance Data



**TDXL2-1-S-24-W**  
Luminous Intensity Distribution



**TDXL2-1-D-24-W**  
Luminous Intensity Distribution

Model	# Sides	# Modules	CCT	System Level Power	Delivered Lumens	Efficacy	L70 Calculated Life
TX2L-4-24-S-3-48-W	Single-Sided	3 Qty.	6500K	7.5W	1,200	160 LPW	200,000 Hours
TX2L-4-24-S-4-48-W	Single-Sided	4 Qty.	6500K	10.0W	1,600	160 LPW	200,000 Hours
TX2L-4-24-D-3-48-W	Double-Sided	3 Qty.	6500K	15.0W	2,400	160 LPW	200,000 Hours
TX2L-4-24-D-4-48-W	Double-Sided	4 Qty.	6500K	20.0W	3,200	160 LPW	200,000 Hours

### Spacing Charts

#### Double Face Sign Cabinet Spacing Chart

Distance From Face	22"-36"	20"	18"	16"	14"	12"	10"	8"	6"
Multiple Row Spacing	24"	22"	20"	18"	16"	14"	12"	8"	6"
Module-To-Module Spacing	15"	15"	15"	15"	15"	15"	15"	15"	12"

#### Single Face Sign Cabinet Spacing Chart

Distance From Face	11"-18"	10"	9"	8"	7"	6"	5"	4"	3"
Multiple Row Spacing	24"	22"	20"	18"	16"	14"	12"	8"	6"
Module-To-Module Spacing	15"	15"	15"	15"	15"	12"	12"	10"	7"

### Power Supply & Loading Specifications

	Direction	Minimum # of Modules	Maximum # of Modules
PSB-1-24-96	Single-Sided	4 Qty.	36 Qty.
PSB-1-24-96	Double-Sided	2 Qty.	18 Qty.

# TX2L | TDXL2 Retrofit Kit

## Sign Cabinet Lighting

### Special Order - Retrofit Kits

Model	T12 Replacements
TX2L-1-24-D-1-18-W	18"   1 Module   Double-Sided   6500K   TX2L Kit
TX2L-1-24-D-2-24-W	24"   2 Modules   Double-Side   6500K   TX2L Kit
TX2L-1-24-D-2-30-W	30"   2 Modules   Double-Side   6500K   TX2L Kit
TX2L-1-24-D-2-36-W	36"   2 Modules   Double-Side   6500K   TX2L Kit
TX2L-1-24-D-3-42-W	42"   3 Modules   Double-Side   6500K   TX2L Kit
TX2L-1-24-D-4-48-W	48"   4 Modules   Double-Side   6500K   TX2L Kit
TX2L-1-24-D-4-60-W	60"   4 Modules   Double-Side   6500K   TX2L Kit
TX2L-1-24-D-4-64-W	64"   4 Modules   Double-Side   6500K   TX2L Kit
TX2L-1-24-D-5-72-W	72"   5 Modules   Double-Side   6500K   TX2L Kit
TX2L-1-24-D-6-84-W	84"   6 Modules   Double-Side   6500K   TX2L Kit
TX2L-1-24-D-6-96-W	96"   6 Modules   Double-Side   6500K   TX2L Kit
TX2L-1-24-D-7-108-W	108"   7 Modules   Double-Side   6500K   TX2L Kit
TX2L-1-24-D-8-117-W	117"   8 Modules   Double-Side   6500K   TX2L Kit
TX2L-1-24-D-8-120-W	120"   8 Modules   Double-Side   6500K   TX2L Kit
TX2L-1-24-S-1-18-W	18"   1 Module   Single-Sided   6500K   TX2L Kit
TX2L-1-24-S-2-24-W	24"   2 Modules   Single-Sided   6500K   TX2L Kit
TX2L-1-24-S-2-30-W	30"   2 Modules   Single-Sided   6500K   TX2L Kit
TX2L-1-24-S-2-36-W	36"   2 Modules   Single-Sided   6500K   TX2L Kit
TX2L-1-24-S-3-42-W	42"   3 Modules   Single-Sided   6500K   TX2L Kit
TX2L-1-24-S-4-48-W	48"   4 Modules   Single-Sided   6500K   TX2L Kit
TX2L-1-24-S-4-60-W	60"   4 Modules   Single-Sided   6500K   TX2L Kit
TX2L-1-24-S-4-64-W	64"   4 Modules   Single-Sided   6500K   TX2L Kit
TX2L-1-24-S-5-72-W	72"   5 Modules   Single-Sided   6500K   TX2L Kit
TX2L-1-24-S-6-84-W	84"   6 Modules   Single-Sided   6500K   TX2L Kit
TX2L-1-24-S-6-96-W	96"   6 Modules   Single-Sided   6500K   TX2L Kit
TX2L-1-24-S-7-108-W	108"   7 Modules   Single-Sided   6500K   TX2L Kit
TX2L-1-24-S-8-117-W	117"   8 Modules   Single-Sided   6500K   TX2L Kit
TX2L-1-24-S-8-120-W	120"   8 Modules   Single-Sided   6500K   TX2L Kit

### Mounting Hardware

Mounting hardware included with every extrusion purchased. Each set includes a bag containing:

1. L-Brackets (2 Qty.)
2. Z-Brackets (2 Qty.)
3. Interconnect Support Bracket (1 Qty.)
4. Phillips Round Head Screws (4 Qty.)



# TX2L | TDXL2 Retrofit Kit

## Sign Cabinet Lighting

### Accessories

#### PSB-1-24-96 US LED 24V/96W Power Supply

#### Overview

The PSB 24V is a high-performance, Class 2 power supply unit intended for use with LED lighting in outdoor signage applications. It is designed to withstand moisture with an IP66 environmental rating and is RoHS compliant. The PSB is engineered to speed up installation and ensure reliable operation long term.



#### Key Features

- For use in outdoor signage applications
- 24VDC, Class 2 power supply
- 90-305VAC input voltage
- Complies with UL 879, UL 8750, UL 1310 and CSA 22.2
- Complies with FCC 47CFR Part 15
- Same loading as prior model PSA-24-100
- IP66 rated housing



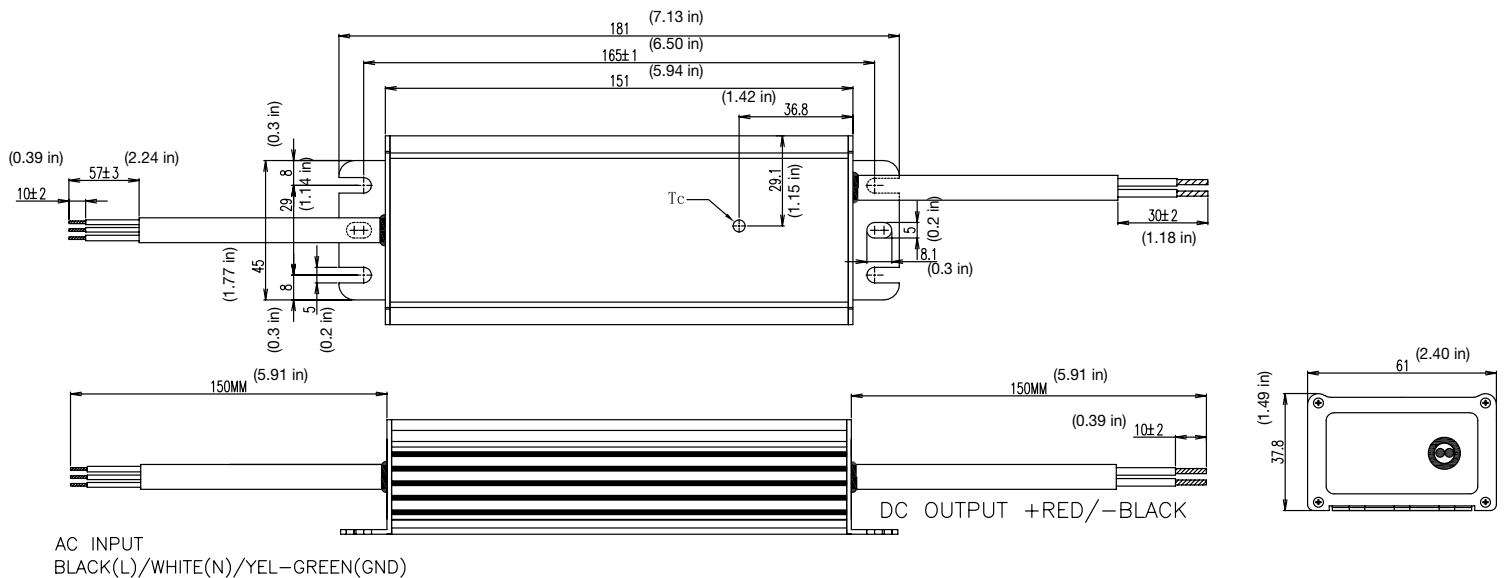
#### Electrical

- Input voltage: 90-305VAC (120V/1.05A), (230V/0.56A), (277V/0.50A)
- Output voltage: 24VDC
- Output current: 4.0A
- Output power: 100W max
- Operating temperature: -30°C to +50°C (-30°F to +122°F)

#### Construction

- Weight: 1.5 lbs. (0.68kg)
- 10 ct. package quantity
- Housing designed for high thermal capability

#### Dimensions



# TX2L | TDXL2 Retrofit Kit

## Sign Cabinet Lighting

### Accessories

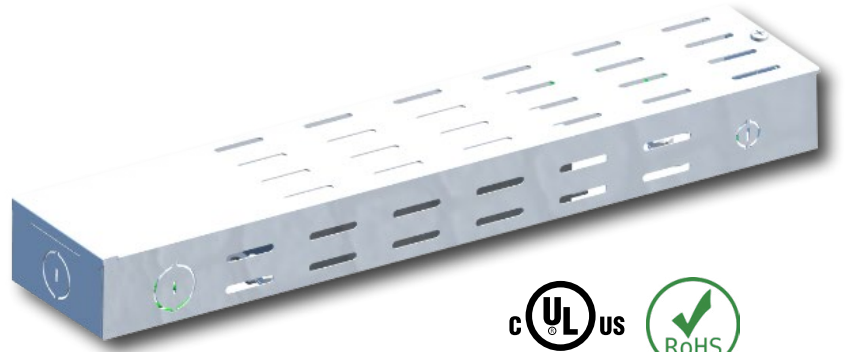
**PS2-1-WT** Life Extender Power Supply Enclosure | White

**PS2-1-BK** Life Extender Power Supply Enclosure | Black

**PS2-1-NA** Life Extender Power Supply Enclosure | Natural Galvanized

### Overview

The PS2 is a multi-purpose power source Box used in LED lighting ranging from signage to commercial and industrial applications. The PS2 is designed to simplify installation of LED drivers and wire connections, all enclosed within one box. It's available as a UL Listed enclosure or as a junction box and LED driver combo. The enclosure is designed for indoor (dry/damp) locations and meets electrical code requirements. It has knockouts on both sides of the enclosure to accommodate all of the input and output connections.



### Key Features

- Engineered for use with signage lighting, commercial lighting, and industrial lighting applications.
- Available as a UL Listed enclosure or as a junction box and LED driver combo.
- Suitable for air handling spaces.
- Complies with UL 879, UL 8750, UL 1310, and CSA 22.2
- Rated for indoor (dry/damp) locations.

### Construction

- Robust 24-gauge steel housing protects components from harsh environments.
- Ventilation on three sides of the enclosure optimize thermal management.
- Housing is protected by a corrosion resistant powder coat finish.
- Dimensions: 15 in. X 3 in. X 1.63 in.
- Weight: 1.30 lbs.

### Mounting

- Suitable for cabinet or surface mounting use.
- Consult factory for additional mounting options.

### Dimensions

