



- The installation must only be performed by a licensed electrician.
- **THIS PRODUCT MUST BE INSTALLED IN ACCORDANCE WITH THE APPLICABLE INSTALLATION CODE BY A PERSON FAMILIAR WITH THE CONSTRUCTION AND OPERATION OF THE PRODUCT AND THE HAZARDS INVOLVED.**
- To prevent death, injury or damage to property, this product must be installed in accordance to National Electrical Code (NFPA70) in the US or Canadian Electrical Code (CSA22.1) in Canada.
- Disconnect power before installing the product or servicing it.
Wait until fixture has cooled down before installing or servicing the fixture.
Use 18 AWG cord when using the strain relief included with this fixture.

A. Suspension Mounting - Figure 1-3

1. Snap the two stainless steel mounting brackets on the back of the fixture (Fig 1).
2. Snap the two “V” hangers into the mounting brackets (Fig 2).
3. Suspend the fixture via chain or aircraft cable (Fig 3).

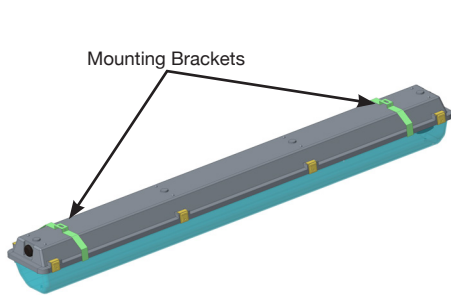


FIG 1

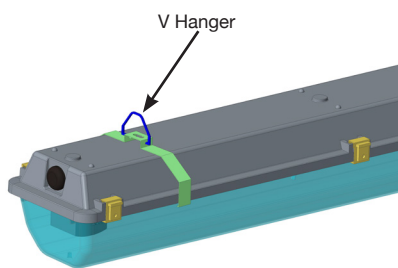


FIG 2

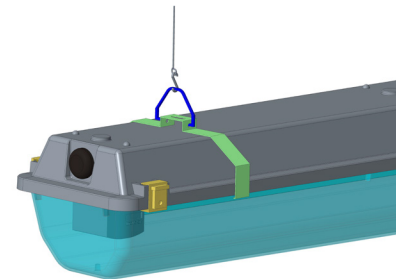


FIG 3

A. Surface Mounting - Figure 4-5

1. Install two stainless steel mounting brackets onto a flat surface with suitable fasteners (Fig 4).
2. Snap the fixture onto the mounting brackets (Fig 5).

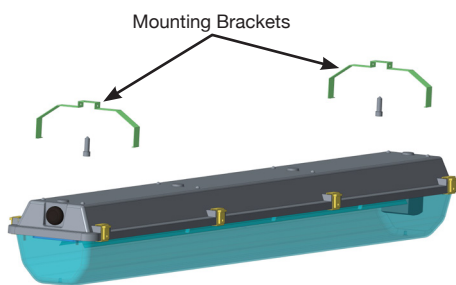


FIG 4

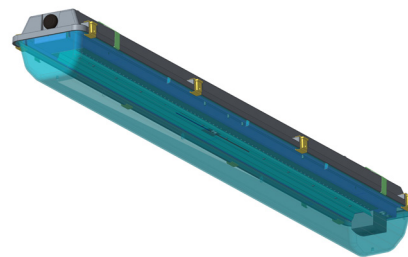


FIG 5

A. Electrical Connection - Figure 6-8

1. Open the fixture via the 8 latches and remove the LED gear tray assembly via the 4x 8-32 Phillips Head mounting screws. Be careful not to damage the LEDs or reflector if present (Fig 6).
2. The gear tray can be hung off of the gear tray mounts while connecting the fixture (Fig 7).
3. Wire the fixture according to NEC guidelines and reassemble.

