



To reduce the risk of death, personal injury or property damage from fire, electric shock, falling parts, cuts/abrasions, and other hazards read all warnings and instructions included with and on the fixture box and all fixture labels.

Before installing, servicing, or performing routine maintenance upon this equipment, follow these general precautions.

Commercial installation, service and maintenance of luminaires should be performed by a qualified licensed electrician.

For residential installation: If you are unsure about the installation or maintenance of the luminaires, consult a qualified licensed electrician and check your local electrical code.

**DO NOT INSTALL DAMAGED PRODUCT!**

This fixture is intended to be connected to a properly installed and grounded UL listed junction box.

**WARNING - RISK OF ELECTRICAL SHOCK**

Turn off electrical power at fuse or circuit breaker box before wiring fixture to the power supply.

Turn off the power when you perform any maintenance.

Verify that supply voltage is correct by comparing it with the luminaire label information.

Make all electrical and grounded connections in accordance with the National Electrical Code and any applicable local code requirements.

All wiring connections should be capped with UL approved wire connectors.

**CAUTION - RISK OF INJURY**

Wear gloves and safety glasses at all time when removing luminaire from carton, installing, servicing or performing maintenance.

Avoid direct eye exposure to the light source while it is on.

Account for small parts and destroy packing material, as these may be hazardous to children.

**CAUTION: RISK OF FIRE**

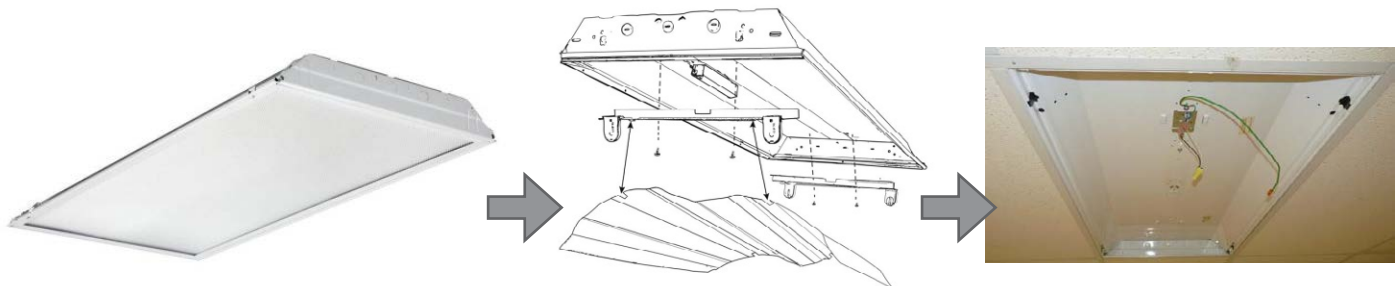
Keep combustible and other materials that can burn away from luminaire and lamp/lens.

**MIN 90° C SUPPLY CONDUCTORS**

**NOTE: THIS KIT IS DESIGNED FOR A 1" WIDE T-BAR**

Included in this kit you should find:

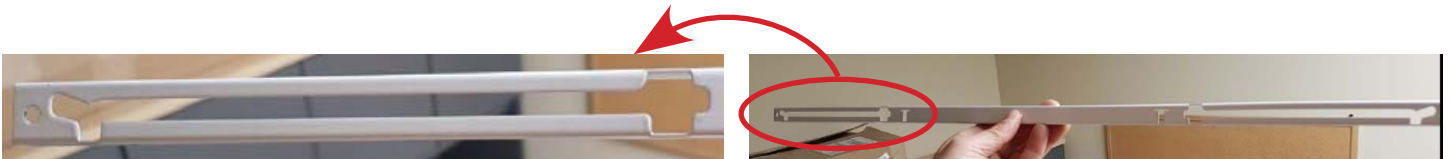
- TDK1/TEG1 Light Fixture Body with Mounting Bolt Hinges
- 2x T-Bar Mounting "LIFT RAILS"



These graphics are for retrofits only.

## INSTALLATION INSTRUCTIONS

1. To avoid electrical shock, disconnect power to old fixture or to line voltage wires.
2. For retrofits, remove lens or louver, reflector, electrical cover channel, sockets, and socket bars. Consult local codes if it is legal before you leave old fluorescent ballasts in place.
3. Your new TDK1/TEG1 is provided with 2x "LIFT RAILS" as shown below. Each rail has slotted tracks that are mirrored on left and right sides. Orient as shown.



- 4a. For retrofit, lift the 2-ft end of the old fluorescent fixture up enough to slide one end of the LIFT RAIL under and into the corner where 4-ft and 2-ft T-Bar meet. While keeping one end of the LIFT RAIL in the corner, carefully slide the opposite end of the LIFT RAIL into the other corner. Once the LIFT RAIL is tight to the wall of the 2-ft T-Bar, lower the old fixture down on top of the LIFT RAIL. At this point you may choose to fasten the LIFT RAIL to the T-Bar by drilling a self-tapping screw through one of the pilot holes provided in the middle of the LIFT RAIL. Repeat Step 4 for the second LIFT RAIL on the opposite side. If you are performing a retrofit, the old fixture should be resting on both LIFT RAILS located at either end of the fixture. You should notice a gap between the under sides of the old fixture and the T-Bar.

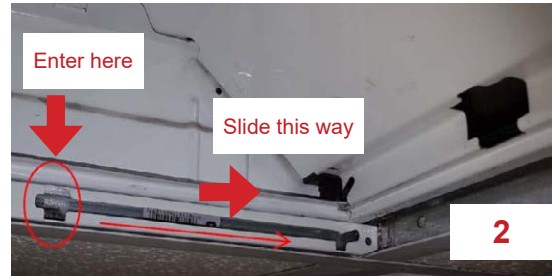
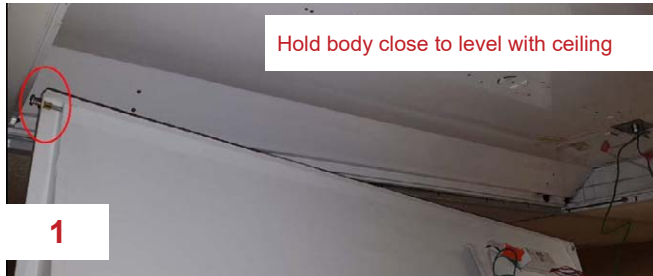


- 4b. For new construction, lay the 2x LIFT RAILS on the opposite ends of the opening.

- 4c. For ceilings with 1/2" wide T-Grid, install first L-Bracket on the side with the hinge points. Attach with (2) sheet metal screws (not provided).



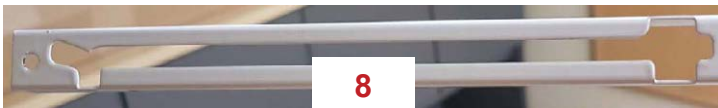
5. (1) Lift the TDK1/TEG1 fixture body so that the back is facing towards you with the hinge bolts at top left and top right corners. Angle the fixture body so that the top left hinge bolt HEAD ends the LIFT RAIL slot (2). After entry, slide partially towards the end of the slot (3). NOTE: The fixture body must be held close to parallel with the ceiling and angled slightly in order to allow the top right hinge bolt HEAD to enter the opposite LIFT RAIL in the same fashion (4) (5).



6. After the top left and top right hinge bolt HEADS have been installed into the LIFT RAIL slots, the fixture body may be allowed to hang for hands free splicing. Install the safety cable provided at both ends of the fixture prior to splicing. Proceed with wire splicing with ground wires being spliced first. Use the power disconnect provided for line and neutral (6a). For new construction, replace the cover plate with knockouts (6b).



7a. After splicing is complete, bundle the wires neatly so that they will not bind between fixture and T-Bar as you raise the fixture in place. Raise the fixture slowly upward as it pivots on the hinge bolts near the end of the LIFT RAILS (7). Gently lift the hinge side of the fixture body to slide all the way up the end of the slots on the LIFT RAILS. This will allow the opposite edge of the TDK1/TEG1 closest you to clear the T-Bar face. Raise the non-hinge side above the T-Bar and slowly pull back until you feel the hinge bolts drop into the locking slot (8).



7b. For ceilings with 1/2" T-Grid, install the second L-Bracket as the TDK rotates into place. Then secure it with (2) sheet metal screws (not provided).





### Optional C-Clip Installation

1. Drop one end of the fixture out of the ceiling grid to expose the fixture frame. Slide the C-Clip onto the frame and squeeze into place. Do this on both corners of one end of the fixture.



1



2

2. Push the fixture back into the grid holding both C-Clips in place.



3

3. Slide both C-Clips toward the end of the fixture assuring good contact with the ceiling grid.