

LED LIGHTING FOR STORAGE FACILITIES

NEW CONSTRUCTION & RETROFIT SPECIFICATION GUIDE



USLED[™]
Always the Right Choice!

L1 Inside Storage Units

Location:	Inside Storage Units - Retrofit & New Construction		
Manufacturer:	US LED		
Description:	9" Round LED Mini Panel Ceiling Light with Selectable Wattage and Integrated Occupancy/Photocell Sensor		
Model Number:	SCL2-9-UNVL-10-50-WH		
Lumens:	1,213-1,987	Wattage:	10-18
L70 Lifetime:	≥30,000 hrs.		
Warranty:	Ten-Year Warranty		



L2 Storage Area Hallways

Location:	Storage Area Hallways		
Manufacturer:	US LED		
Description:	LLT1 4' LED Linear Strip With Selectable CCT and Wattage White Finish Dimmable		
Model Number:	LLT1-4-40-UNVL-SCCT-N		
Lumens:	3,579-5,945	Wattage:	25-40
L70 Lifetime:	≥181,000 hrs.		
Warranty:	Ten-Year Warranty		
Accessory:	30202 10 ft. Aircraft Cable Mount Kit		



L2E Storage Area Hallways

Location:	Storage Area Hallways		
Manufacturer:	US LED		
Description:	LLT1 4' LED Linear Strip With Selectable CCT and Wattage Dimmable Battery Back-Up		
Model Number:	LLT1-4-40-UNVL-SCCT-Y		
Lumens:	3,579-5,945	Wattage:	25-40
L70 Lifetime:	≥181,000 hrs.		
Warranty:	Fixture: Ten-Year Warranty BBU: Five-Year Warranty		



L2-OS Utility Rooms

Location:	Utility Rooms		
Manufacturer:	US LED		
Description:	LLT1 4' LED Linear Strip With Selectable CCT and Wattage Dimmable Integrated Motion Sensor		
Model Number:	LLT1-4-40-UNVL-SCCT-N-M		
Lumens:	3,579-5,945	Wattage:	25-40
L70 Lifetime:	≥181,000 hrs.		
Warranty:	Ten-Year Warranty		



L4 Non-Customer Accessible Hallways with Faux Doors

Location:	Non-Customer Accessible Hallways With Faux Doors	
Manufacturer:	US LED	
Description:	(1) 4' LED Lone Star Single Lamp Fixture (Top/Bottom Door)	
Model Number:	Fixture: LS-1-4 LED Tube: ST1-4-UNV-4-27A-50-GL-DE	
Lumens:	4,250	Wattage: 27.9
L70 Lifetime:	200,000 hrs.	
Warranty:	Fixture: Three-Year Warranty LED Tube: Ten-Year Warranty	



L5 Customer Accessible Hallways with Faux Doors

Location:	Customer Accessible Hallways With Faux Doors	
Manufacturer:	US LED	
Description:	HLS2 High Output LED Linear Strip White Finish Surface/Suspended Dimmable	
Model Number:	HLS2-1-4-UNVL-80-50	
Lumens:	12,676	Wattage: 78.7
L70 Lifetime:	≥167,000 hrs.	
Warranty:	Ten-Year Warranty	



L6E Stairwells

Location:	Egress Stairways	
Manufacturer:	US LED	
Description:	LLT1 4' LED Linear Strip Selectable CCT and Wattage Battery Back-Up Integrated Motion Sensor	
Model Number:	LLT1-4-40-UNVL-SCCT-Y-M	
Lumens:	3,579-5,945	Wattage: 25-40
L70 Lifetime:	≥181,000 hrs.	
Warranty:	Fixture: Ten-Year Warranty BBU: Five-Year Warranty	



L9 Office - Drop Ceilings

Location:	Office - Drop Ceilings
Manufacturer:	US LED
Description:	L-Grid® ProMax Select 2x2 Flat Panel
Model Number:	FTR4-22-UNVL-26-SCCT
Lumens:	3,770-5,800
Wattage:	26-40
L70 Lifetime:	≥165,000 hrs.
Warranty:	Ten-Year Warranty
Additional Models Available:	FTR4-14-UNVL-26-SCCT L-Grid ProMax Select 1x4 FTR4-24-UNVL-32-SCCT L-Grid ProMax Select 2x4

**L9E** Office - Drop Ceilings

Location:	Office - Drop Ceilings
Manufacturer:	US LED
Description:	L-Grid® ProMax Select 2x2 Flat Panel With Battery Back-Up
Model Number:	FTR4-22-UNVL-26-SCCT BBU
Lumens:	3,770-5,800
Wattage:	26-40
L70 Lifetime:	≥165,000 hrs.
Warranty:	Ten-Year Warranty

**L9A** Office Alternate

Location:	Retail Office - Recessed Mount
Manufacturer:	US LED
Description:	TEG4 Essential LED Low-Profile Recessed Troffer with Selectable CCT and Wattage
Model Number:	TEG4-1-22-UNVL-18-SCCT
Lumens:	2,525-4,679
Wattage:	18-35
L70 Lifetime:	≥87,000 hrs.
Warranty:	Five-Year Warranty

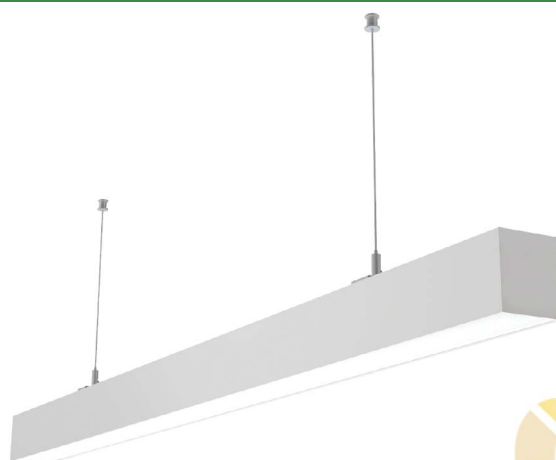
**L9A-E** Office Alternate

Location:	Retail Office - Recessed Mount
Manufacturer:	US LED
Description:	TEG4 Essential LED Low-Profile Recessed Troffer with Selectable CCT and Wattage Integrated Battery Back-Up
Model Number:	TEG4-1-22-UNVL-18-SCCT B
Lumens:	2,525-4,679
Wattage:	18-35
L70 Lifetime:	≥87,000 hrs.
Warranty:	Fixture & BBU: Five-Year Warranty



L9B Office Alternate - Open Ceilings

Location:	Retail Office Light - Open Ceiling Only	
Manufacturer:	US LED	
Description:	LAS1 Architectural Strip with Selectable CCT 4ft 120-277V White Linkable Down Light Only	
Model Number:	LAS1-4-30-UNVL-SCCT-WH-L-DO	
Lumens:	3,900	Wattage: 30.0
L70 Lifetime:	≥50,000 hrs.	
Warranty:	Five-Year Warranty	
Accessory:	LAS-NC1 8' Suspended Mount Kit (No Power) LAS-PC1 8' Suspended Mount Kit (Power Cable)	



L10 Interior Vestibule & Outdoor Overhang

Location:	Interior Vestibule & Outdoor Overhang	
Manufacturer:	US LED	
Description:	LED Downlight With Selectable CCT and Wattage 2700-5000K ≥90 CRI 6" Round	
Model Number:	LTR4-6R-UNV-2-SCCT-WH	
Lumens:	955-1,840	Wattage: 9-19
L70 Lifetime:	≥60,000 hrs.	
Warranty:	Ten-Year Warranty	
Accessory:	EM-H25170-LBF Emergency Battery Back-Up	



L12 Under Canopy - 4 ft. Section

Location:	Under Canopy - 4 ft. Section	
Description:	SFAL LED Accent Lighting Kit 4 ft. Extrusion LED Tape Light and End Caps (Driver Not Included)	
Model Number:	SFAL-1-50-4-24	
Lumens:	460 lumens/ft.	CCT: 5000K
L70 Lifetime:	≥50,000 hrs.	
Warranty:	Five-Year Warranty	
Accessory:	PSB-1-24-96 24V/96W Power Supply (Required) (One Power Supply Supports A Max Length of 16 ft. SFAL)	



L12-PS Power Supply

Location:	Under Canopy - Power Supply	
Manufacturer:	US LED	
Description:	US LED Power Supply 24V/96W 120-277 Primary Input Voltage	
Model Number:	PSB-1-24-96	
Warranty:	Ten-Year Warranty	



L14 Storage Facility Entrance - Vestibule

Location:	Storage Facility Entrance - Vestibule		
Manufacturer:	US LED		
Description:	1x1 Soffit EH w/ Drywall Flange Kit		
Model Number:	GTR2-11EH-50-80-UNV2-S		
Lumens:	2,250	Wattage:	23.5
L70 Lifetime:	200,000 hrs.		
Warranty:	Ten-Year Warranty		
Accessory:	Surface Mount Kit - SSMK1 Recessed Mount Kit - DW-11		



L15A Wall Mount Drive Aisle - Standard Lumens

Location:	Wall Mount Drive Aisle 40' O.C.		
Manufacturer:	US LED		
Description:	QubePAK®4 LED Wall Pack - Bronze Finish		
Model Number:	ULWL1-3-UNVL-50-40-BZ		
Lumens:	6,600	Wattage:	40.0
L70 Lifetime:	≥167,000 hrs.		
Warranty:	Ten-Year Warranty		
Accessory:	WG Wire Guard		



L15B Wall Mount Drive Aisle - High Lumens

Location:	Wall Mount Drive Aisle 40' O.C.		
Manufacturer:	US LED		
Description:	QubePAK®4 LED Wall Pack - Bronze Finish		
Model Number:	ULWL1-1-UNVL-50-72-BZ		
Lumens:	12,528	Wattage:	72.0
L70 Lifetime:	≥167,000 hrs.		
Warranty:	Ten-Year Warranty		
Accessory:	WG Wire Guard		



L16A Wall Mount Drive Aisle Dark Sky - Standard Lumens

Location:	Wall Mount Drive Aisle 40' O.C. (Where Dark Sky Compliance Is Required)	
Manufacturer:	US LED	
Description:	EcoNight®4 LED Wall Pack Bronze Finish	
Model Number:	ULFC1-3-UNVL-50-40-BZ	
Lumens:	6,600	Wattage: 40.0
L70 Lifetime:	≥167,000 hrs.	
Warranty:	Ten-Year Warranty	



L16B Wall Mount Drive Aisle Dark Sky - High Lumens

Location:	Wall Mount Drive Aisle 40' O.C. (Where Dark Sky Compliance Is Required)	
Manufacturer:	US LED	
Description:	EcoNight®4 LED Wall Pack Bronze Finish	
Model Number:	ULFC1-1-UNVL-50-75-BZ	
Lumens:	12,375	Wattage: 75.0
L70 Lifetime:	≥167,000 hrs.	
Warranty:	Ten-Year Warranty	



L17 Exterior Faux Storage Doors

Location:	Exterior Faux Storage Doors	
Manufacturer:	US LED	
Description:	Night Guard LED Flood Light Bronze Finish Selectable CCT and Wattage 1/2" NPT Knuckle	
Model Number:	NGFL-18-SCCT-UNVL-K-BR	
Lumens:	2,804-4,935	Wattage: 18-30
L70 Lifetime:	≥146,000 hrs.	
Warranty:	Ten-Year Warranty	
Accessory:	NG-24-BZ 24" Bronze Arm Mount Kit	



L18 Elevator Pit Light

Location:	Elevator Pit Light	
Manufacturer:	US LED	
Description:	VaporStar Vapor Tight Enclosed 4' LED Light	
Model Number:	VTF1-1-4-UNVL-40-2-50	
Lumens:	5,200	Wattage: 40.0
L70 Lifetime:	≥161,000 hrs.	
Warranty:	Five-Year Warranty	



L19 Main Loading Areas & Covered Parking

Location:	Main Loading Areas & Covered Parking		
Manufacturer:	US LED		
Description:	Outdoor Parking Garage Canopy Light - Bronze		
Model Number:	QPXL1-1-75-UNVL-50-70-BZ		
Lumens:	11,440	Wattage:	77.0
L70 Lifetime:	200,000 hrs.		
Warranty:	Ten-Year Warranty		



L19 ALT Main Loading Areas & Covered Parking

Location:	Main Loading Areas & Covered Parking		
Manufacturer:	US LED		
Description:	Outdoor Parking Garage Canopy Light Selectable CCT and Wattage Bronze Finish		
Model Number:	QPS1-80-UNVL-SCCT-BZ		
Lumens:	7,301-12,241	Wattage:	48-80
L70 Lifetime:	≥185,000 hrs.		
Warranty:	Ten-Year Warranty		



L20 Outdoor Area/Site

Location:	Exterior Fixture for Pole or Building Mount		
Manufacturer:	US LED		
Description:	LED Area Light with Selectable CCT (5M Lens)		
Model Number:	RCALR-2-30-SCCT-UNVL-1-5-10SP-Z5 300		
Lumens:	45,056	Wattage:	299.8
L70 Lifetime:	≥167,000 hrs.		
Warranty:	Ten-Year Warranty		

Accessories:
(Specify Mount)

AM-B - Slip Fitter Mount (Bronze)
DM-B - Adjustable Mount Square/Round Pole (Bronze)
YM-B - Trunnion Mount (Bronze)
ADM-B - 2 3/8" Round Tenon Mount (Bronze)
HSS1-1 - House Side Shield (Bronze)



L21 Outdoor Flood

Location:	Exterior Fixture for Pole or Building Mount		
Manufacturer:	US LED		
Description:	LED Area Light with Selectable CCT (5M Lens)		
Model Number:	RCALR-2-15-SCCT-UNVL-1-5-10SP-Z5 120		
Lumens:	17,963	Wattage:	119.6
L70 Lifetime:	≥167,000 hrs.		
Warranty:	Ten-Year Warranty		

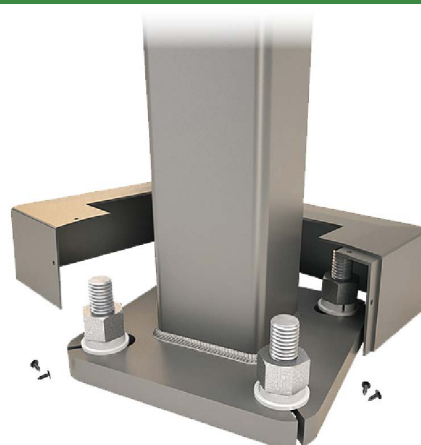
Accessories:
(Specify Mount)

AM-B - Slip Fitter Mount (Bronze)
DM-B - Adjustable Mount Square/Round Pole (Bronze)
YM-B - Trunnion Mount (Bronze)
ADM-B - 2 3/8" Round Tenon Mount (Bronze)
HSS1-1 - House Side Shield (Bronze)



EXTERIOR POLES

Location:	Exterior Parking Lot Poles
Description:	Square Straight Steel Pole 20' Height 4"x4" 11 Gauge Standard Bronze Finish
Model Number:	PLP20SQS11-BZ
Accessories:	PLP4SQ-AB - 4 Qty. Anchor Bolts (3/4"x17"x3") PLP4SQ-BC-BZ - Bronze Pole Base Cover



L22 Exit Sign

Description:	2-Sided Exit Sign with Battery Back-Up		
Model Number:	ESX1		
Voltage:	120-277V	Rating:	Damp Location
Warranty:	Five-Year Warranty		



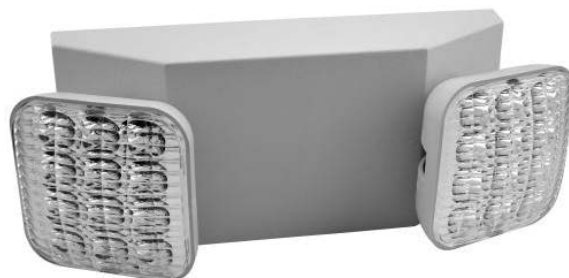
L23 Exit Sign/Light Combo

Description:	LED Exit Sign with Two LED Emergency Lights		
Model Number:	ESEM-PC-UNVL-2-RC		
Voltage:	120-277V	Rating:	Damp Location
Warranty:	Five-Year Warranty		



L24 Emergency Light

Description:	Dual Head LED Emergency Light		
Model Number:	EM-PC-UNVL-2-RC		
Voltage:	120-277V	Rating:	Damp Location
Warranty:	Five-Year Warranty		



L25 Decorative Emergency Light

Description:	Decorative Emergency Light		
Model Number:	DBEL-ACEM-HL-BR-SDT-CW-PC		
Voltage:	120-277V	Rating:	Damp Location
Warranty:	Five-Year Warranty		



L30 High Ceilings

Location:	High Ceiling Applications (>15 ft.)		
Manufacturer:	US LED		
Description:	ExsaBay® Xtreme Compact LED High Bay		
Model Number:	EBXC1-1-UNVL-90-SCCT-188-N-N		
Lumens:	31,020	Wattage:	188.0
L70 Lifetime:	≥167,000 hrs.		
Warranty:	Ten-Year Warranty		



LED LAMPS - STANDARD LUMEN OUTPUT

Description:	4' T8 LED Lamp - Type B Single/Double-Ended		
Manufacturer:	US LED		
Model Number:	ST1-27-UNV-4-10A-50-GL-DE-T8		
Lumens:	1,750	Wattage:	10.5
L70 Lifetime:	200,000 hrs.		
Warranty:	Ten-Year Warranty		



LED LAMPS - HIGH LUMEN OUTPUT

Description:	4' T8 LED Lamp - Type B Single/Double-Ended		
Manufacturer:	US LED		
Model Number:	ST1-4-UNV-4-27A-50-GL-DE		
Lumens:	4,250	Wattage:	27.9
L70 Lifetime:	200,000 hrs.		
Warranty:	Ten-Year Warranty		



EMERGENCY LED LAMP

Description:	4' T10 Emergency LED Lamp With Integrated Battery Back-Up		
Manufacturer:	US LED		
Model Number:	EMT1-2-UNV-4-15A-50-DE-T10		
Lumens:	2,800 (360 EM)	Wattage:	15
L70 Lifetime:	≥50,000 hrs.		
Warranty:	Five-Year Warranty		



BATTERY BACK-UP

Description:	ACE LEDs Emergency LED Driver		
Model Number:	ACE-G10B-180CP		
Voltage:	120-277VAC	Operation Time:	90 minutes
Manufacturer Warranty:	Five-Year Warranty		



TIME CLOCK

Location:	Illuminated Signage		
Manufacturer:	Intermatic Inc.		
Description:	Astro-Timer		
Model Number:	ET8015C		
Voltage:	120-277V	Backup:	3-Year Battery
Warranty:	One-Year Warranty		



WALL SENSOR SWITCH

Location:	Office		
Manufacturer:	McWong International, Inc.		
Description:	PacWave Dual Technology Occupancy/Vacancy Wall Switch Sensor		
Model Number:	PSC-ID-D-WS-120		
Voltage:	120-277V	Sensor Technology:	Passive Infrared (PIR) & Ultrasonic
Warranty:	Five-Year Warranty		



OCCUPANCY SENSOR (Line Voltage)

Location:	Hallway		
Manufacturer:	McWong International, Inc.		
Description:	PacWave Ceiling Mount Occupancy Sensor 1,600 ft. ² / 360° Motion		
Model Number:	PSC-ID-I-CM-101		
Voltage:	120-277V	Sensor Technology:	Passive Infrared (PIR)
Warranty:	Five-Year Warranty		



OCCUPANCY SENSOR (Low Voltage)

Location:	Hallway		
Manufacturer:	McWong International, Inc.		
Description:	PacWave Ceiling Mount Occupancy Sensor 1,600 ft. ² / 360° Motion		
Model Number:	PSC-ID-D-CM-301		
Voltage:	24 VDC	Sensor Technology:	Passive Infrared (PIR) & Ultrasonic
Accessory:	PSC-AC-PP-100 - PacWave Power Supply		
Warranty:	Five-Year Warranty		



WE DO THE RIGHT THINGS, THE RIGHT WAY, AND ON TIME.

PLEASE CONTACT US LED WITH ANY QUESTIONS:

EMAIL: CUSTOMERSERVICE@USLED.COM

PHONE: (866) 972-9191

All US LED Customer Service team members will be notified of your request, and the first available team member will take the call or reply to your email. If you have any suggestions on improving our service, please email us your requests or suggestions.



USLED
Always the Right Choice!

WWW.USLED.COM | 866-972-9191 | CUSTOMER SERVICE@USLED.COM

© US LED™ All Rights Reserved. For informational purposes only.
See USLED.com for product specifications, warranties, and terms & conditions.