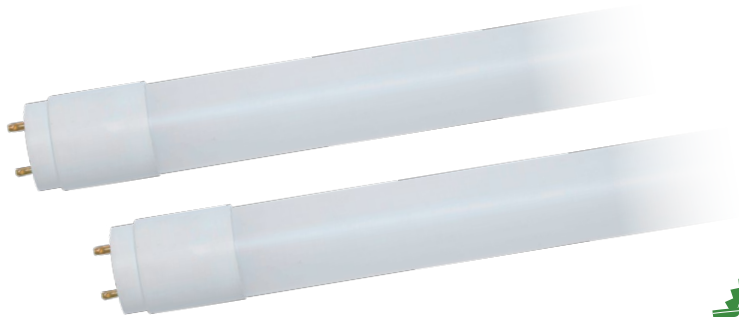




Always the Right Choice!

15.9W LED Tubes

T8 Type B Double-Ended



Key Features

- Quick and easy LED upgrade for existing open or enclosed fixtures.
- Type B - Internal LED driver bypasses existing ballasts and eliminates the need for an external LED driver.
- Instant on - no delay or warm up time.

Electrical

- 120-277V AC input.
- Power Factor: ≥ 0.90 ; THD: $< 20\%$
- Operating Temperature: -20°C to 45°C (-4°F to 113°F).

Warranty

- Backed by US LED's industry-leading Ten-Year warranty.

Construction

- Available in 4 ft. length.
- Double-ended power input.
- Fully-sleeved frosted glass tube housing with PET film is shatter-resistant.
- Easy disposal, non-hazardous waste.

Optics

- Industry-leading LEDs with 3000K, 3500K, 4000K, and 5000K CCT (minimum 80 CRI).
- Full Illumination: $\geq 170^{\circ}$ Beam Angle.
- Lumen Maintenance: 200,000 hours (L70) ¹

Project	Date
---------	------

Catalog Number	Type
----------------	------

Product Performance Summary

Lumen Output	Up to 2,750 lumens
Efficacy	Up to 173 LPW
CRI	≥ 80 CRI
Available CCT	3000K, 3500K, 4000K, and 5000K
Warranty	Ten-Year Warranty

Product Overview

T8 Type B double-ended LED tubes are the perfect solution for upgrading existing fluorescent fixtures to LED technology without a comprehensive reinstall. These LED tubes offer quality illumination up to 200,000 hours (L70) and are backed by US LED's industry-leading Ten-Year Warranty.

Product Applications

- Retail Stores
- Hallways/Corridors
- Conference Rooms
- Office Spaces
- Industrial/Warehouses
- Classrooms
- Storage Areas
- Convenience Stores

Product Certifications

- UL Listed
- DLC Listed
- Suitable for Indoor Damp Locations
- RoHS Compliant



Ordering Information

Example: ST1-4-UNV-4-15A-50-GL-DE

ST1							
Series	Variant	Input Voltage	Length	Wattage	CCT	Diffuser	Power Location
4	Standard	UNV 120-277V	4 4 ft.	15A 15.9W	30 3000K 35 3500K 40 4000K 50 5000K	GL Glass	DE Double Ended

1. Product 'Lifetimes' refer only to the LED light engine, not the power source, and are based on the Illuminating Engineering Society's TM21 Projected Lumen Maintenance methodology at a 25° C / 77° F ambient temperature. The lifetimes are solely meant to be a guide for expected LED degradation and not a warranty or predictive of their actual life, which can be affected by ambient temperatures and other factors.

15.9W LED Tubes

T8 Type B Double-Ended

Performance Data

Model	Input Voltage	Available CCT	Input Power	Lumen Output	Efficacy	CRI	L70 Calculate Life
ST1-4-UNV-4-15A-XX-GL-DE	120-277VAC	3000K/3500K/4000K/5000K	15.9W	2,750	173 LPW	≥80	200,000 Hours

Accessories

Model	Description
LS-1-4	LoneStar, 1 Tube Strip Fixture Housing
LS-2-4	LoneStar Tandem, 8' Single Strip Housing
TWS1	TwinStar, 2 Tube Strip Fixture Housing
TWS1-T	TwinStar Tandem, 8' Double Strip Housing
TWS1-1	TwinStar, 2 Tube Strip Fixture Housing With Accommodations For Occupancy Sensor
TR-3-4	TriStar, 3 Tube Strip Fixture Housing
USQS-44	QuadStar, 4 Tube Wide Body Strip Housing
HBT1	SixShooter, 6 Tube High Bay Fixture Housing
HBT1-1	SixShooter, 6 Tube High Bay Fixture Housing With Accommodations For Occupancy Sensor
UCLL-24	2x4 Housing with Ribbed Lens - Ceiling Mounted
UCLLS-24	2x4 Housing with Ribbed Lens - Surface Mounted
LS-WG-48	Wireguard Protection for LoneStar Strip Fixture Housing
BCK-8-2-US	1x8 Two Lamp Retrofit
BCK-8-4-US	1x8 Four Lamp Retrofit
RKSR-232TAN-WINST	8' to 4' Conversion Kit
USVT-24	4' Vapor Tight Housing
USVT-44	8' Vapor Tight Housing