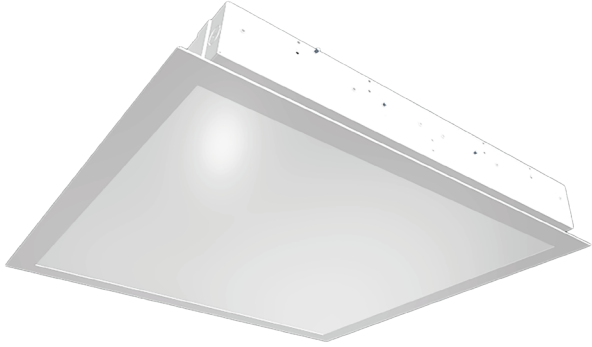


L-Grid® 2EH 2x2

Flat Panel LED Troffer



Key Features

- Energy-efficient 2x2 LED recessed troffer for both new construction or retrofit applications.
- NSF certified for controlled environments.
- Integrated battery back-up option available.
- Plenum air return option with slots available.
- Low-profile design provides flexibility for installing in low plenum areas (non-IC rated).

Electrical

- 120-277VAC input.
- 0-10V dimming standard (Mark 7 interface), excluding High Flux Level.
- Integrated constant power battery back-up accessory available.
- Operating Temperature for High Flux Level: -40°C to +30°C (-40°F to +86°F) ²

Mounting

- Easy to install in standard T-Grid ceilings.

Construction

- Extruded aluminum frame with steel backing prevents light leak and is built for superior strength and durability.
- Frosted white lens offers complete shielding and uniform light distribution that's glare-free.
- Weight: 15.0 lbs. (6.8kg)

Optics

- Edge-to-edge illumination with no visible bright spots or pixelation.
- Industry leading LEDs with 3500K, 4000K, and 5000K CCT (minimum 80 CRI).
- Lumen Maintenance: >181,000 hours (L70) ¹

Warranty

- Backed by US LED's industry-leading Ten-Year Warranty.

Project	Date
---------	------

Catalog Number	Type
----------------	------

Product Performance Summary

Lumen Output	Up to 21,480 lumens
Efficacy	Up to 123 LPW
CRI	≥ 80 CRI
Available CCT	3500K, 4000K & 5000K
Warranty	Ten-Year Warranty

Product Overview

For new construction or one-for-one replacement applications, the L-Grid® 2EH 2x2 troffer stands ready. It is the total lighting solution, providing an appealing and unobtrusive presence while simultaneously delivering extraordinary light through a flat, frosted lens. With convenient installation options available, integrating this luminaire into your workplace will be simple and straight-forward, regardless of the application.

Product Applications

- Classrooms
- Conference Rooms
- Office Spaces
- Hallways/Corridors
- Industrial/Warehouses
- Convenience Stores
- Retail Areas
- Health Care Facilities
- Food Preparation Areas
- Commercial Spaces

Product Certifications

- UL Listed
- Complies with UL1598 and CSA 22.2
- Suitable for Damp Locations
- NSF Certified
- RoHS Compliant



Ordering Information

GTR2							
Series	Size	CCT	CRI	Input Voltage	Flux Level	Air Return	Lens
	22EH 2x2	35 3500K	80 80 CRI	UNV2 120-277V	H High ²	A Air Return	F Frosted
		40 4000K				N None	
		50 5000K					

Example: GTR2-22-50-80-UNV2-H-N-F R001

Product Code	Accessories
R001 11,000L	DW-22TX 2x2 Drywall Flange Kit
R002 12,000L	ILB-CP12A Constant Power LED Emergency Driver
	IP710-LFZ Leviton® Wall Control Dimmer

1. US LED product 'Lifetimes' refer only to the LED light engine, not the power source, and are based on the Illuminating Engineering Society's TM21 Projected Lumen Maintenance methodology at a 25° C / 77° F ambient temperature. The lifetimes are solely meant to be a guide for expected LED degradation and not a warranty or predictive of their actual life, which can be affected by ambient temperatures and other factors.

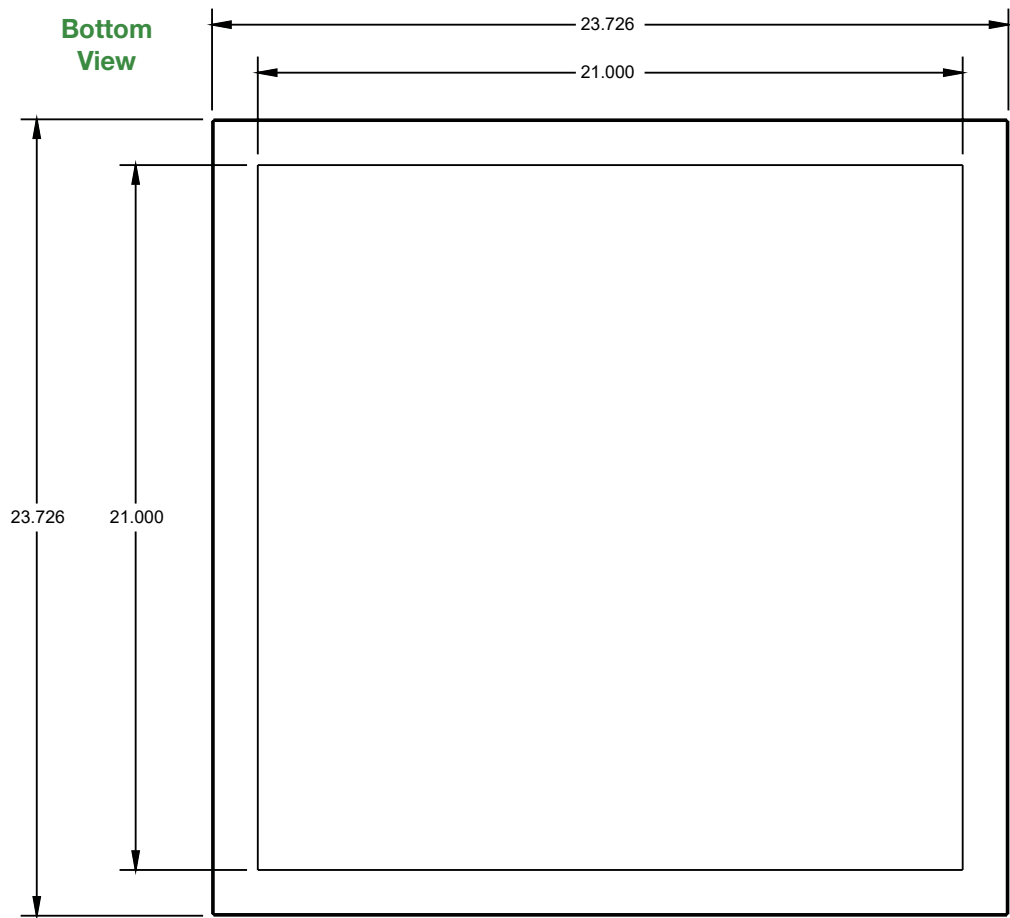
2. Non-Insulation Contact: Must be installed in plenum air return grid ceiling. Install with minimum spacing between: (A) Center-to-center of adjacent luminaires: 48" (1200mm) (B) Top of luminaires to overhead building member: 10" (250mm) (C) Luminaire center to side building member: 24" (600mm)

L-Grid® 2EH 2x2

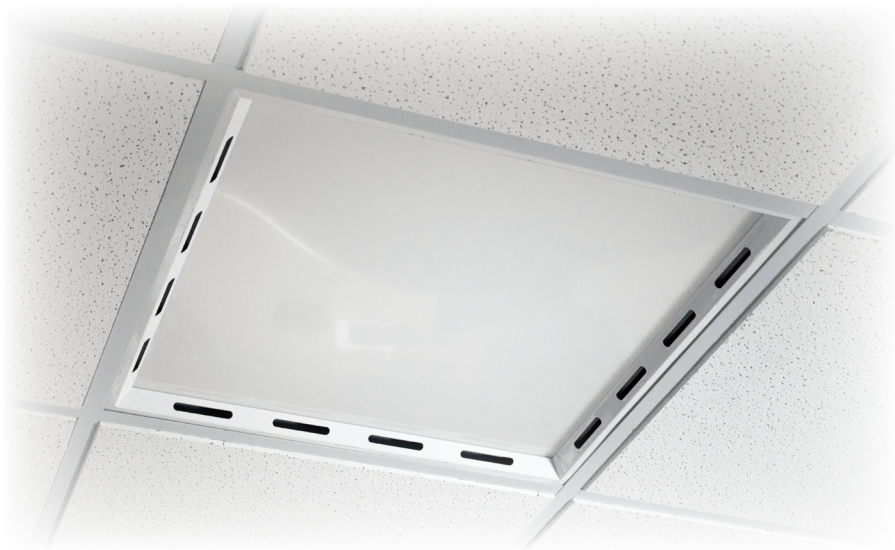
Flat Panel LED Troffer



Dimensions



Air Return Shown
[Option A]



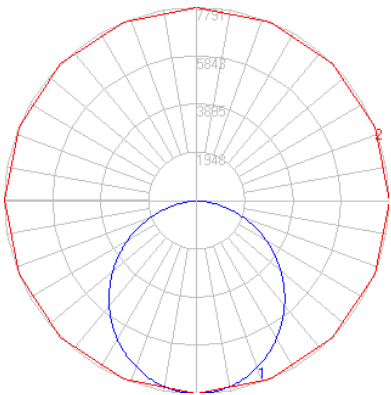
L-Grid®2EH 2x2

Flat Panel LED Troffer

Performance Data

Luminaire Photometric Data

Model Number	GTR2-22EH-50-80-UNV2-H-X-F
Issue Date	01-25-2016
IESNA	LM-63-2002
Lamp	LED
Total Input Watts	195.7
Total Lumens	21,480
Efficacy	110 LPW
Spacing Criterion	0°-180° = 1.24 90°-270° = 1.24



Model	System Level Power	Delivered Lumens	Efficacy	CCT	L70 Calculate Life
GTR2-22EH-50-80-UNV2-H-X-F R001	100.0W	11,000	110 LPW	5000K	181,000 Hours
GTR2-22EH-50-80-UNV2-H-X-F R002	110.0W	12,000	110 LPW	5000K	181,000 Hours
GTR2-22EH-50-80-UNV2-H-X-F	195.7W	21,480	110 LPW	5000K	181,000 Hours

L-Grid® 2EH 2x2

Flat Panel LED Troffer

Accessories

DW-22TX 2x2 Drywall Flange Kit

Overview

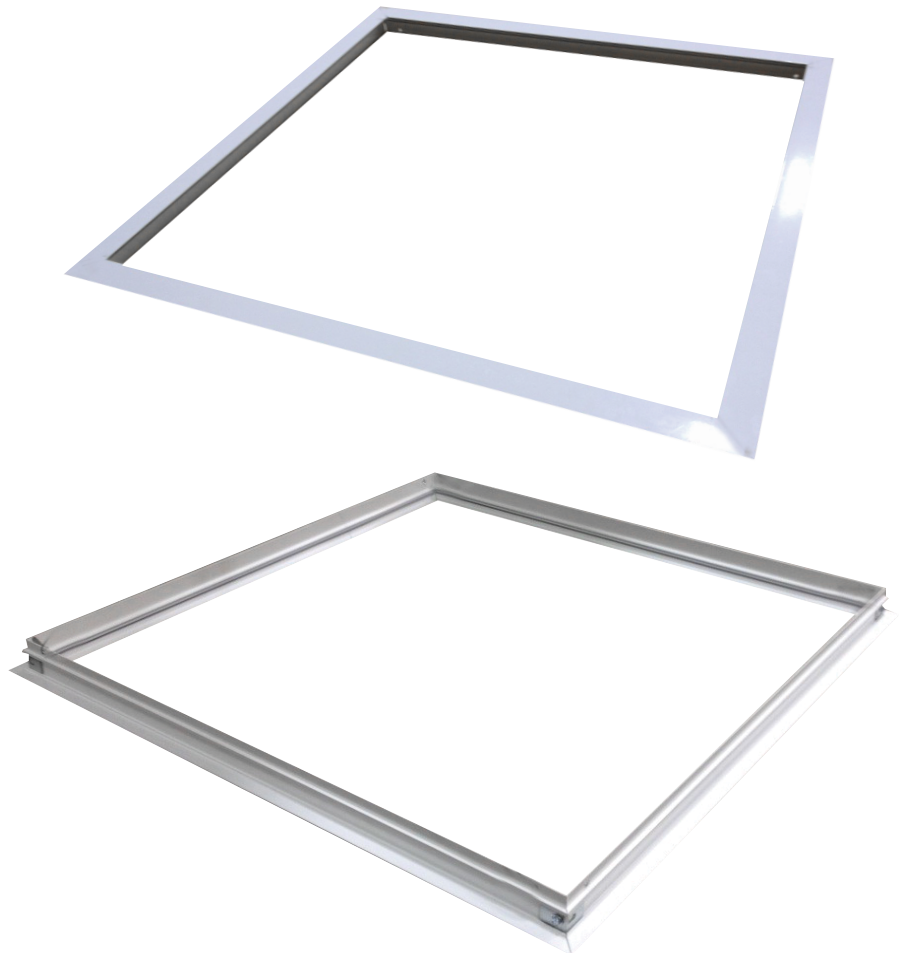
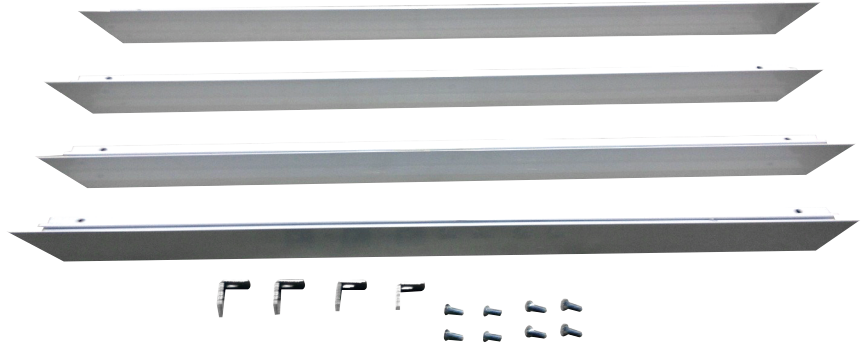
Drywall flange kits act as T-Bar frames to support recessed troffer luminaires in wood, drywall, or plaster ceilings. From the room side, flange kits mimic the appearance of T-Bars in a baked white enamel finish.

Key Features

- 22 gauge steel, pre-painted white finish.
- All kits include: (2) side flanges, (2) end flanges, (4) corner brackets, and (8) thread cutting screws.

Specifications

- 2x2 Rough Opening: 24.66" x 24.66"



L-Grid® 2EH 2x2

Flat Panel LED Troffer

Accessories

ILB-CP12A - Constant Power LED Emergency Driver

Overview

The ILB-CP12 from IOTA Engineering is a UL Listed and Classified LED emergency driver that allows the same LED fixture to be used for both normal and emergency operation. In the event of a power failure, the ILB-CP12 switches to the emergency mode and operates the existing fixture for 90 minutes. The unit contains a battery, charger, and converter circuit in a single can and is available in different mounting configurations for individual fixture requirements. The ILB-CP12 will operate an LED array load at 12 watts with constant power at a rated output voltage of 10V-60V.

Key Features

- UL Listed (UL924/UL1310) for factory and field installations.
- Patented constant power design maintains illumination throughout the 90-minute runtime with no light degradation.
- Two-wire universal AC input.
- Output Class 2 compliant.
- Six mounting configurations available.
- Long life high temperature Ni-Cad battery.
- Includes single-piece TBTS test switch and charge indicator accessory kit.
- Meets or exceeds all NEC, IBC, and Life Safety Code Emergency Lighting requirements.



IP710-LFZ - Leviton® Wall Control Slide Dimmer

Overview

Leviton offers many products that will help lower electrical costs and add convenience to everyday living. By simply replacing standard switches with dimmers reduces energy consumption and extends bulb life. IllumaTech Preset Dimmers feature a low-profile fluid slide bar movement for fine adjustment of light levels or fan speeds that's accompanied by an easy-to-use ON/OFF preset switch. The switch provides quick ON/OFF control without disturbing your favorite pre-selected settings. Most feature a built-in LED locator light, as well.

Key Features

- 1200VA, 120/277 Volt AC 60Hz
- Single-Pole & 3-Way
- IllumaTech Preset Electro-Mechanical Electronic 0-10VDC LED Power
- Supply Dimmer - White face assembled on device. Ivory and Light Almond available.

