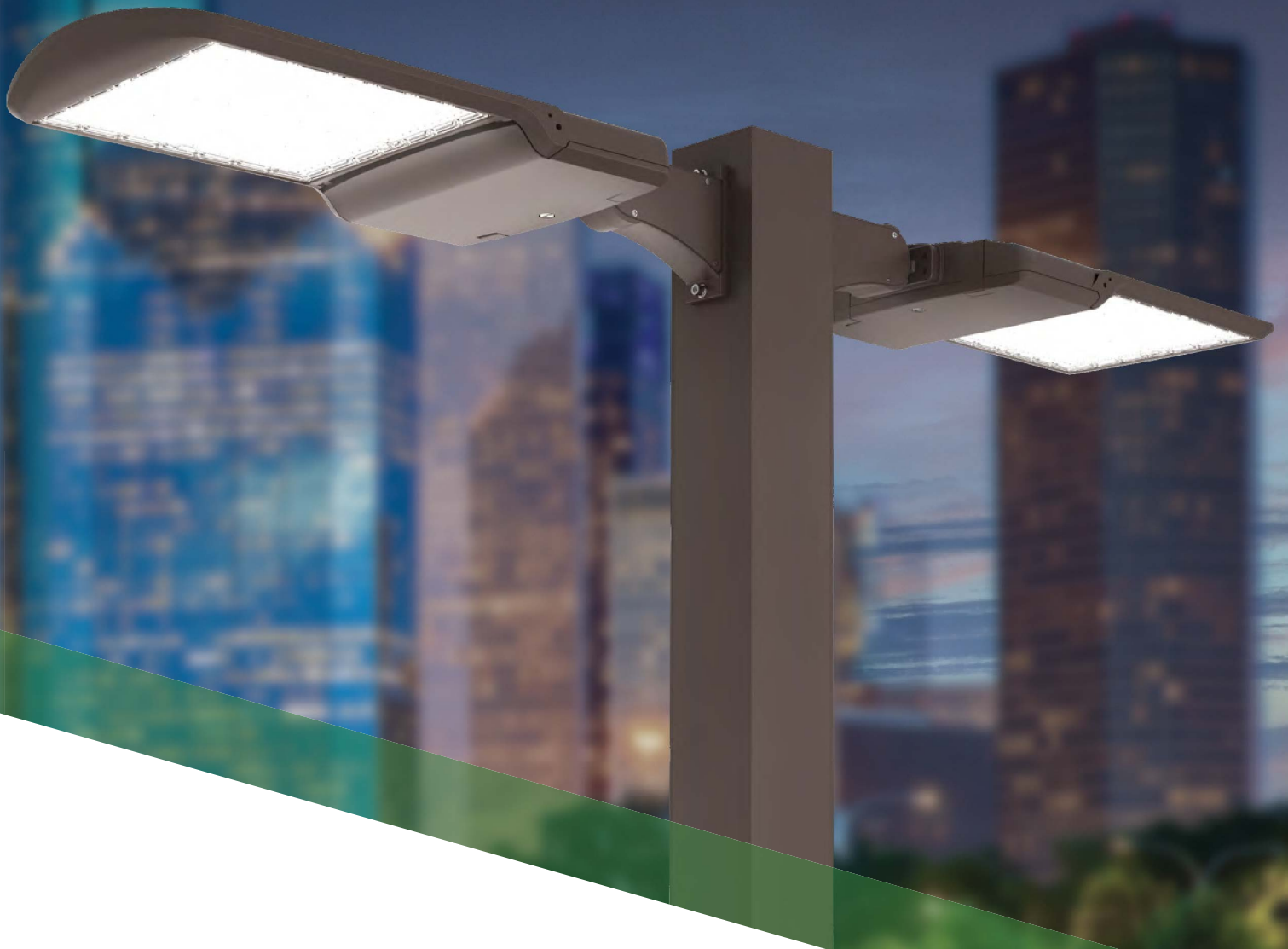


# RightChoice

Outdoor LED Area & Site Lighting



Elevate To A New Level of  
Distinction and Performance

**USLED**<sup>™</sup>  
*Always the Right Choice!*

# More Efficient, Just As Brilliant

US LED has always been the right choice for industry professionals for thousands of lighting projects. Now, the newly refreshed Right Choice Series elevates area and site lighting to a new level of distinction and efficiency, providing immense value.



**RCALR-2-48 (480W)**  
Ideal for high mounting heights reaching up to 40 feet and extensive coverage areas.



**RCALR-2-30 (200W/240W/300W)**  
Optimal for applications like perimeter lighting or access road areas usually mounting up to 30 ft or more.



**RCALR-2-15 (100W/120W/150W)**  
Best for pedestrian areas, like walking paths to the building, typically no higher than 25 ft.



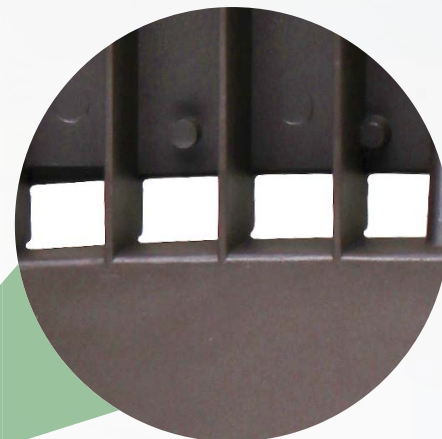
The Right Choice Series (RCALR-2) has been designed to capitalize on the unmatched optical and thermal qualities exclusive to best-in-class LED technology. With proprietary optics and multiple sizes, it offers the ultimate flexibility for any outdoor application. Aesthetically, the Right Choice Series presents a modern approach to lighting with a sleek style that beautifully integrates into any outdoor architectural plan.



# RightChoice

Outdoor LED Area & Site Lighting

Precision-molded optics balance light distribution and location, making it night sky-friendly and avoid wasted light. Optional rotatable optics available.



Housing design includes a built-in venting system that effectively flushes water and debris between the fins.

7-pin twist-lock photocell receptacle option available for additional energy savings.



Die-cast aluminum housing protects integral components from harsh environments and optimizes thermal management. (IP65)

Field-selectable CCT with 3000K, 4000K, and 5000K CCT provides flexibility to match user preference.



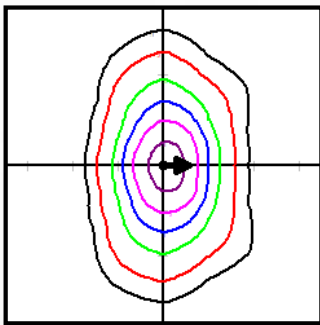
Easy tool-less access to the driver compartment. The door is gasketed to protect drivers and wiring from elements that could degrade performance.



# Advanced Optical Performance

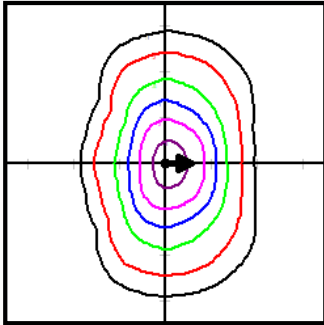
Illuminate your site with precision using specialized light distributions available with the Right Choice Series of area lights. Its innovative design perfectly balances light intensity and location, making it night sky-friendly and avoiding wasted light. Likewise, rotatable optics provide flexibility for the unique aspects of a site plan to deliver light exactly where it's most needed.

## Type II Distribution



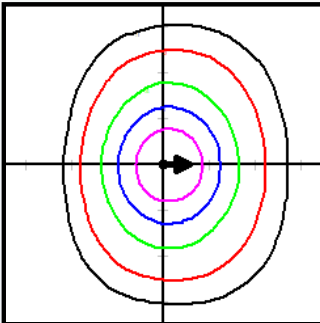
Type II distribution forms a wide, lateral asymmetric pattern typically used for applications needing narrow lighting. Examples might include car lot front rows, walkways, side streets, jogging paths, and entrances from the roadway.

## Type III Distribution



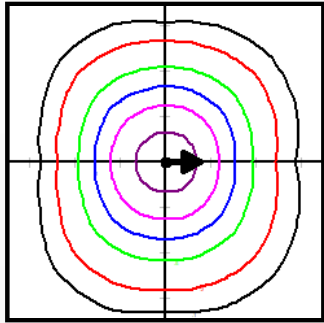
Type III distribution projects light evenly and equally forward on both sides in an "asymmetric" pattern. Commonly used in parking lots, wider roadways, and other applications where a larger area of lighting is required.

## Type IV Distribution



Type IV distribution is intended to maximize the amount of light going forward in a longer "semicircular" pattern. This optic is used around the perimeters of parking lots where there is no desire for wasted light behind the pole. It's also used for sport applications and parking areas on the sides of buildings.

## Type V Distribution



Type V distribution forms a symmetrical round or square pattern that allows the light to have the same intensity at all angles. Primarily used in parking lot interiors, crossroads, and roadway centers. It's also meant for large commercial parking lots where evenly distributed lighting is necessary.

**Optional rotatable optics offer design flexibility based on the site layout rather than the limitations of the LED luminaire. It's recommended that US LED create a photometric layout for luminaire placement. Consult the factory for more information.**





**USLED<sup>TM</sup>**  
*Always the Right Choice!*