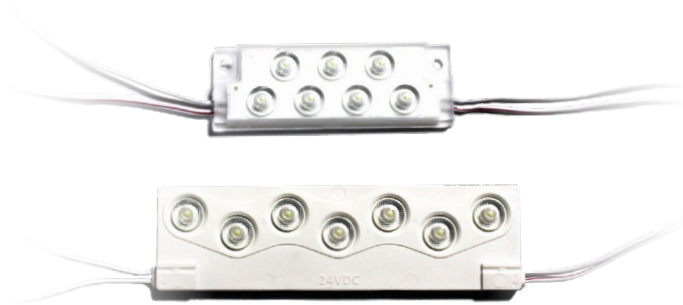


# TDXL Modules

## Sign Cabinet Lighting



### Key Features

- Ultra-long life LED modules proven to provide high performance illumination.
- Single or double-sided LED modules available; 3"-18" from sign cabinet face.
- 170° beam angle for wide light distribution.

### Electrical

- 24VDC input.
- 0-10V dimming available via controller accessory (sold separately).
- Operating temperature: -40°C to 55°C (-40°F to 131°F)

### Mounting

- Single-sided modules come with VHB adhesive tape to attach to the back of the sign cabinet.
- For double-side modules, the TX1L extrusion kit is available for easier retrofit installations (sold separately).

### Construction

- Modules are IP66 rated to prevent against penetration of dust and moisture.
- Single-sided dimensions: 3.66"x1.26"x0.44"
- Double-sided dimensions: 5.39"x1.57"x0.50"

### Optics

- Industry-leading LEDs with 3000K, 4000K, 5000K, & 6500K CCT (minimum 70 CRI).
- Lumen Maintenance: 200,000 hours (L70) <sup>1</sup>

### Warranty

- Backed by US LED's industry-leading Ten-Year Warranty.

### Ordering Information

Series	Variant	# Sides	Voltage	CCT
1	Standard	<b>S</b> Single Sided	<b>24</b> 24VDC	<b>W30</b> 3000K <b>W40</b> 4000K <b>W50</b> 5000K <b>W</b> 6500K
		<b>D</b> Double Sided		

Example: TDXL-1-S-24-W30

#### TDXL Accessories (Sold Separately)

Part Number	Description
PSB-1-24-96	US LED Power Supply   24 V   96W
PS2-1-NA	Life Extender Power Supply Enclosure   Natural Galvanized
DCA-10-120	0-10V Dimming Controller   120W RoHS   Mark VII

Project	Date
---------	------

Catalog Number	Type
----------------	------

### Product Performance Summary

Lumen Output	Up to 800 lumens
Efficacy	Up to 133 LPW
CRI	≥ 70 CRI
Available CCT	3000K, 4000K, 5000K & 6500K
Warranty	Ten-Year Warranty

### Product Overview

Featuring proprietary LEDs, the TDXL is engineered to provide uniform illumination and utilize wider spacing in existing or new sign cabinets. Available in single-sided or double-sided options, it can provide consistent lighting performance and facilitate easier installation in the field. The TDXL drastically gives you the most lumens per dollar for your signage applications.

### Product Applications

- Single-Sided Sign Cabinets
- Double-Sided Sign Cabinets
- Large Stroke Channel Letters
- General Signage

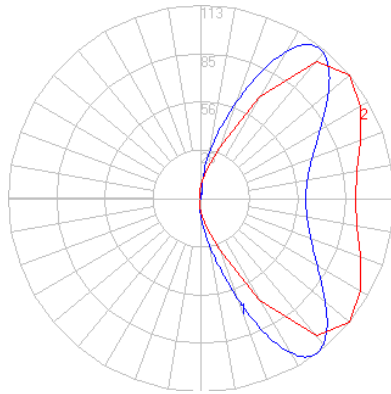
### Product Certifications

- UL Recognized (USA/Canada)
- UL Classified for Retrofits (USA/Canada)
- Suitable for Wet Locations
- IP66 Rated

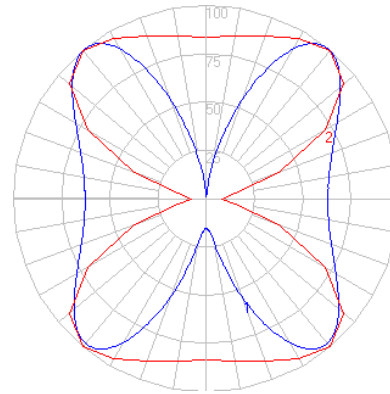


1. US LED product 'Lifetimes' refer only to the LED light engine, not the power source, and are based on the Illuminating Engineering Society's TM21 Projected Lumen Maintenance methodology at a 25° C / 77° F ambient temperature. The lifetimes are solely meant to be a guide for expected LED degradation and not a warranty or predictive of their actual life, which can be affected by ambient temperatures and other factors.

### Performance Data



**TDXL-1-S-24-W**  
Luminous Intensity Distribution



**TDXL-1-D-24-W**  
Luminous Intensity Distribution

Model	CCT	System Level Power	Delivered Lumens	Efficacy	L70 Calculate Life
TDXL-1-S-24-W	6500K	3.0W	400	133 LPW	200,000 Hours
TDXL1-D-24-W	6500K	6.0W	800	133 LPW	200,000 Hours

### Spacing Chart

#### Double Face Sign Cabinet Spacing Chart

Distance From Face	22"-36"	20"	18"	16"	14"	12"	10"	8"	6"
Multiple Row Spacing	24"	22"	20"	18"	16"	14"	12"	8"	6"
Module-To-Module Spacing	15"	15"	15"	15"	14"	12"	10"	6"	5"

#### Single Face Sign Cabinet Spacing Chart

Distance From Face	11"-18"	10"	9"	8"	7"	6"	5"	4"	3"
Multiple Row Spacing	24"	22"	20"	18"	16"	14"	12"	8"	6"
Module-To-Module Spacing	15"	15"	15"	15"	14"	12"	10"	6"	5"

### Packaging Specifications

	Single-Sided	Double-Sided
Master Case	360 Modules	324 Modules
Inner Case	90 Modules	108 Modules
Tray/Bag	30 Modules/Tray	18 Modules/Bag

### Power Supply & Loading Specifications

	Direction	Minimum # of Modules	Maximum # of Modules
PSB-1-24-96	Single-Sided	4 Qty.	30 Qty.
PSB-1-24-96	Double-Sided	2 Qty.	14 Qty.

# TDXL Modules

## Sign Cabinet Lighting

### Accessories

#### PSB-1-24-96 US LED 24V/96W Power Supply

#### Overview

The PSB 24V is a high-performance, Class 2 power supply unit intended for use with LED lighting in outdoor signage applications. It is designed to withstand moisture with an IP66 environmental rating and is RoHS compliant. The PSB is engineered to speed up installation and ensure reliable operation long term.



#### Key Features

- For use in outdoor signage applications
- 24VDC, Class 2 power supply
- 90-305VAC input voltage
- Complies with UL 879, UL 8750, UL 1310 and CSA 22.2
- Complies with FCC 47CFR Part 15
- Same loading as prior model PSA-24-100
- IP66 rated housing



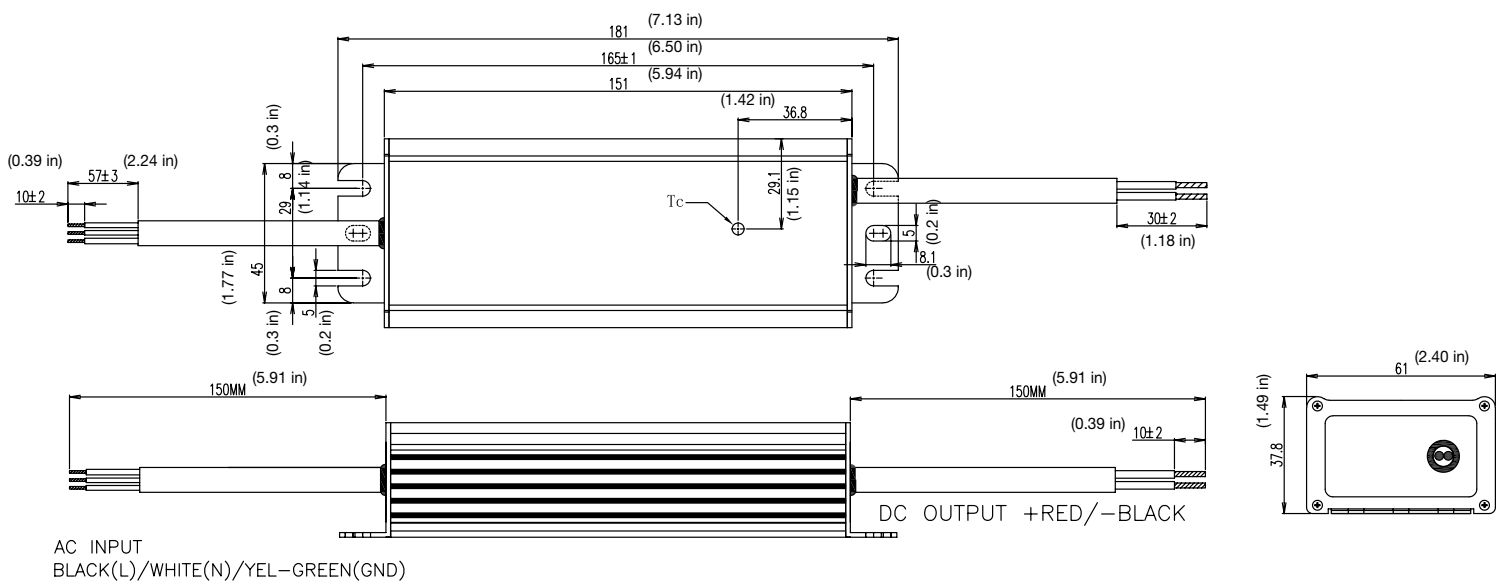
#### Electrical

- Input voltage: 90-305VAC (120V/1.05A), (230V/0.56A), (277V/0.50A)
- Output voltage: 24VDC
- Output current: 4.0A
- Output power: 100W max
- Operating temperature: -30°C to +50°C (-30°F to +122°F)

#### Construction

- Weight: 1.5 lbs. (0.68kg)
- 10 ct. package quantity
- Housing designed for high thermal capability

#### Dimensions



# TDXL Modules

## Sign Cabinet Lighting

### Accessories

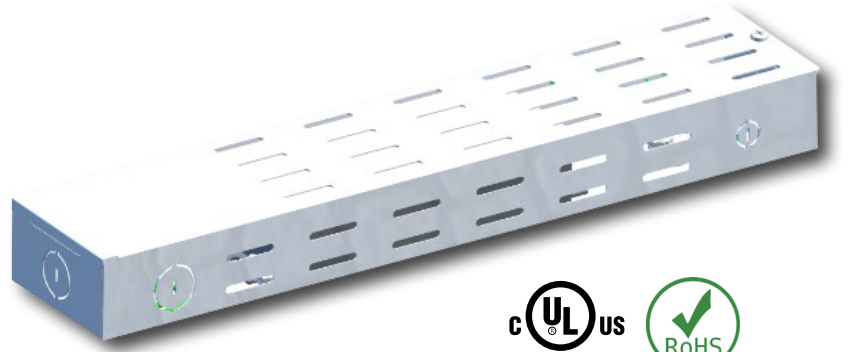
**PS2-1-WT** Life Extender Power Supply Enclosure | White

**PS2-1-BK** Life Extender Power Supply Enclosure | Black

**PS2-1-NA** Life Extender Power Supply Enclosure | Natural Galvanized

### Overview

The PS2 is a multi-purpose power source Box used in LED lighting ranging from signage to commercial and industrial applications. The PS2 is designed to simplify installation of LED drivers and wire connections, all enclosed within one box. It's available as a UL Listed enclosure or as a junction box and LED driver combo. The enclosure is designed for indoor (dry/damp) locations and meets electrical code requirements. It has knockouts on both sides of the enclosure to accommodate all of the input and output connections.



### Key Features

- Engineered for use with signage lighting, commercial lighting, and industrial lighting applications.
- Available as a UL Listed enclosure or as a junction box and LED driver combo.
- Suitable for air handling spaces.
- Complies with UL 879, UL 8750, UL 1310, and CSA 22.2
- Rated for indoor (dry/damp) locations.

### Construction

- Robust 24-gauge steel housing protects components from harsh environments.
- Ventilation on three sides of the enclosure optimize thermal management.
- Housing is protected by a corrosion resistant powder coat finish.
- Dimensions: 15 in. X 3 in. X 1.63 in.
- Weight: 1.30 lbs.

### Mounting

- Suitable for cabinet or surface mounting use.
- Consult factory for additional mounting options.

### Dimensions

