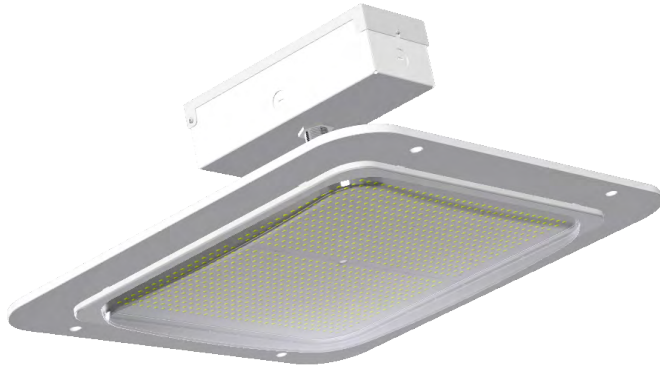




Always the Right Choice!

CanopyStar® XL

Outdoor LED Gas Canopy Light



Key Features

- Low profile, energy-efficient LED canopy designed to accommodate a variety of applications and allow for easy installation.
- Premium photometric performance that results in sites with excellent uniformity.
- Modern aesthetics that easily integrate with any existing architecture.
- Easy installation and field serviceable.
- RoHS compliant; Mercury and UV free.

Electrical

- 120-277VAC or 277-480VAC input 50/60 Hz.
- 1-10V dimming standard.
- Power factor: ≥ 0.90 and THD $\leq 20\%$.
- Operating temperature: -30°C to 45°C (-22°F to 113°F)

Mounting

- Direct surface mount to the canopy or recessed J-Box with additional hardware.

Construction

- Robust die-cast aluminum housing protects integral components from harsh environments and optimizes thermal management.
- Housing is protected by a standard corrosion-resistant white powder coat finish.
- IP65 rated enclosure prevents intrusion from environmental elements that could degrade performance.
- UV-stabilized polycarbonate lens is heat resistant and won't degrade over time.

Optics

- Precision molded lens offers IES Type VS symmetrical distribution of uniform lighting.
- High-efficacy LEDs with 4000K, 5000K, and 5700K CCT (minimum 80 CRI).
- Lumen Maintenance: $\geq 100,000$ hours (L70) ¹

Warranty

- Backed by US LED's industry-leading Ten-Year Warranty.

Project	Date
---------	------

Catalog Number	Type
----------------	------

Product Performance Summary

Lumen Output	Up to 22,500 lumens
Efficacy	Up to 150 LPW
CRI	>80 CRI
Available CCT	4000K, 5000K, & 5700K
Warranty	Ten-Year Warranty

Product Overview

CanopyStar XL is a low profile, energy-efficient LED canopy luminaire engineered for both new construction and retrofit projects. With easy installation in the field, it's the ideal LED canopy for gas stations, convenience stores, restaurant drive-thrus, and other exterior canopy applications. CanopyStar XL offers exceptional light distribution and uniform coverage thanks to its precision molded lens. The CanopyStar XL provides ultra-long life illumination for over 100,000 hours (L70) and is backed by US LED's Ten-Year Warranty.

Product Applications

- Gas Stations
- Convenience Stores
- Restaurant Drive-Thrus
- Bank Drive-Thrus
- Walkway Canopies
- Business Campuses
- Industrial Facilities
- Commercial Exteriors

Product Certifications

- UL Listed
- Complies with UL1598 and CSA C22.2
- DLC Premium Listed
- Suitable for Wet Locations
- Night Sky Friendly
- IP65 Rated Enclosure
- RoHS Compliant



Ordering Information

Example: GCL1-15-UNVH-50-F-WH

GCL1					
Series	Power	Input Voltage	CCT	Lens	Finish
07	70W	UNVL 120-277V	40 4000K	F Frosted	WH White
13	130W	UNVH 277-480V	50 5000K		BZ Bronze
15	150W		57 5700K		CUS Custom Color ²

1. Product 'Lifetimes' refer only to the LED light engine, not the power source, and are based on the Illuminating Engineering Society's TM21 Projected Lumen Maintenance methodology at a 25° C / 77° F ambient temperature. The lifetimes are solely meant to be a guide for expected LED degradation and not a warranty or predictive of their actual life, which can be affected by ambient temperatures and other factors.

2. Please consult factory for more information on additional custom color options.

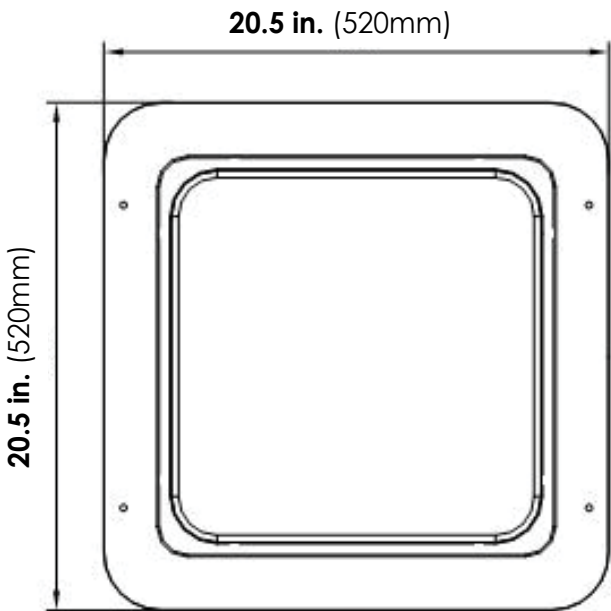
CanopyStar XL

Outdoor LED Gas Canopy Light

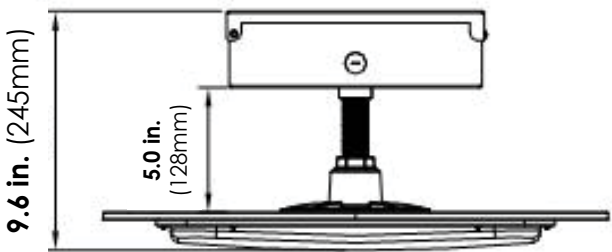


Dimensions

BOTTOM VIEW



SIDE VIEW

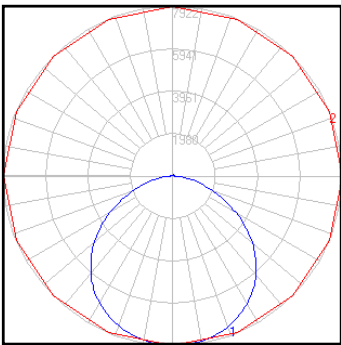


Models	Net Weight	Shipping Weight
70W/130W/150W	12.6 lbs. (5.7kg)	15.6 lbs. (7.1kg)

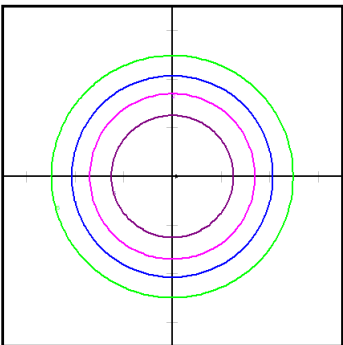
Performance Data

All photometric testing performed to IESNA LM-79 standards by an accredited testing facility. For detailed photometric data please visit www.usled.com.

POLAR CURVE



ISO FOOTCANDLE



15' Mounting Height / 15' Grid Spacing
■ 5 FC ■ 2 FC ■ 1 FC ■ 0.5 FC

Model	System Level Power	Delivered Lumens	Efficacy	CCT	IES Type	L70 Calculated Life
GCL1-07-UNVL-50-F-WH	70W	10,500	150 LPW	5000K	Type VS	≥100,000 Hours
GCL1-13-UNVL-50-F-WH	130W	19,500	150 LPW	5000K	Type VS	≥100,000 Hours
GCL1-15-UNVL-50-F-WH	150W	22,500	150 LPW	5000K	Type VS	≥100,000 Hours