



IMPORTANT SAFETY WARNINGS



THE INSTALLATION MUST ONLY BE PERFORMED BY A LICENSED ELECTRICIAN. TO PREVENT DEATH, INJURY OR DAMAGE TO PROPERTY, THIS PRODUCT MUST BE INSTALLED IN ACCORDANCE TO NATIONAL ELECTRIC CODE (NFPA70) IN THE US OR CANADIAN ELECTRICAL CODE (CSA22.1) IN CANADA.

L'INSTALLATION NE DOIT ÊTRE EFFECTUÉE QUE PAR UN ÉLECTRICIEN AGRÉÉ. POUR PRÉVENIR LES DÉCÈS, LES BLESSURES OU LES DOMMAGES MATÉRIELS, CE PRODUIT DOIT ÊTRE INSTALLÉ CONFORMÉMENT AU CODE NATIONAL DE L'ÉLECTRICITÉ (NFPA70) AUX USA OU CODE CANADIEN DE L'ÉLECTRICITÉ (CSA22.1) AU CANADA.

CONSULT A QUALIFIED ELECTRICIAN TO ENSURE CORRECT BRANCH CIRCUIT CONDUCTOR.

CONSULTER UN ÉLECTRICIEN QUALIFIÉ POUR VOUS ASSURER QUE LES CONDUCTEURS DE LA DÉRIVATION SONT ADÉQUATS.

SUITABLE FOR WET LOCATIONS. SUITABLE FOR OPERATION IN AMBIENT NOT EXCEEDING 40°C (104°F).

CONVIENT AUX ENDROITS HUMIDES. PEUT ÊTRE UTILISÉ À UNE TEMPÉRATURE AMBIANTE N'EXCÉDANT PAS 40°C (104°F).

VAPOR BARRIER MUST BE SUITABLE FOR 90°C (194°F). ACCESS ABOVE CEILING REQUIRED.

LE PARE-VAPEUR DOIT CONVENIR POUR 90 °C (194°F). ACCÈS REQUIS AU-DESSUS DU PLAFOND.

CAUTION – RISK OF FIRE. MIN 75°C (167°F) SUPPLY CONDUCTORS.

ATTENTION – RISQUE D'INCENDIE. LES FILS D'ALIMENTATION 75°C (167°F) MIN.

- To reduce the risk of death, personal injury or property damage from fire, electric shock, falling parts, cuts/abrasions, and other hazards please read all warnings and instructions included with and on the fixture box and all fixture labels.
- Follow all manufacturer's warnings, recommendations and restrictions for: driver type, burning position, mounting locations/methods, replacement and recycling.
- Wear gloves and safety glasses at all times when removing luminaire from carton, installing, servicing or performing maintenance.
- Disconnect or turn off power before installation or servicing the luminaire.
- Do not operate in close proximity to persons, combustible materials or substances affected by heat or drying.
- To prevent wiring damage or abrasion, do not expose wiring to edges of sheet metal or other sharp objects.
- Do not make or alter any open holes in an enclosure of wiring or electrical components during installation.
- DO NOT INSTALL DAMAGED PRODUCT! This luminaire has been properly packed so that no parts should have been damaged during transit. Inspect to confirm. Any part damaged during or after assembly should be replaced.
- Maintenance of the luminaires should be performed by person(s) familiar with the luminaires' construction and operation and any hazards involved. Regular fixture maintenance programs are recommended.
- It will occasionally be necessary to clean the outside of the reflector/lens. Frequency of cleaning will depend on ambient dirt level and minimum light output which is acceptable to user. Reflector/lens should be washed in a solution of warm water and any mild, non-abrasive household detergent, rinsed with clean water and wiped dry.
- Should optical assembly become dirty on the inside, wipe reflector/lens and clean in above manner, replacing damaged gaskets as necessary.
- These instructions do not purport to cover all details or variations in equipment nor to provide every possible contingency to meet in connection with installation, operation, or maintenance.

Specifications and dimensions subject to change without notice.

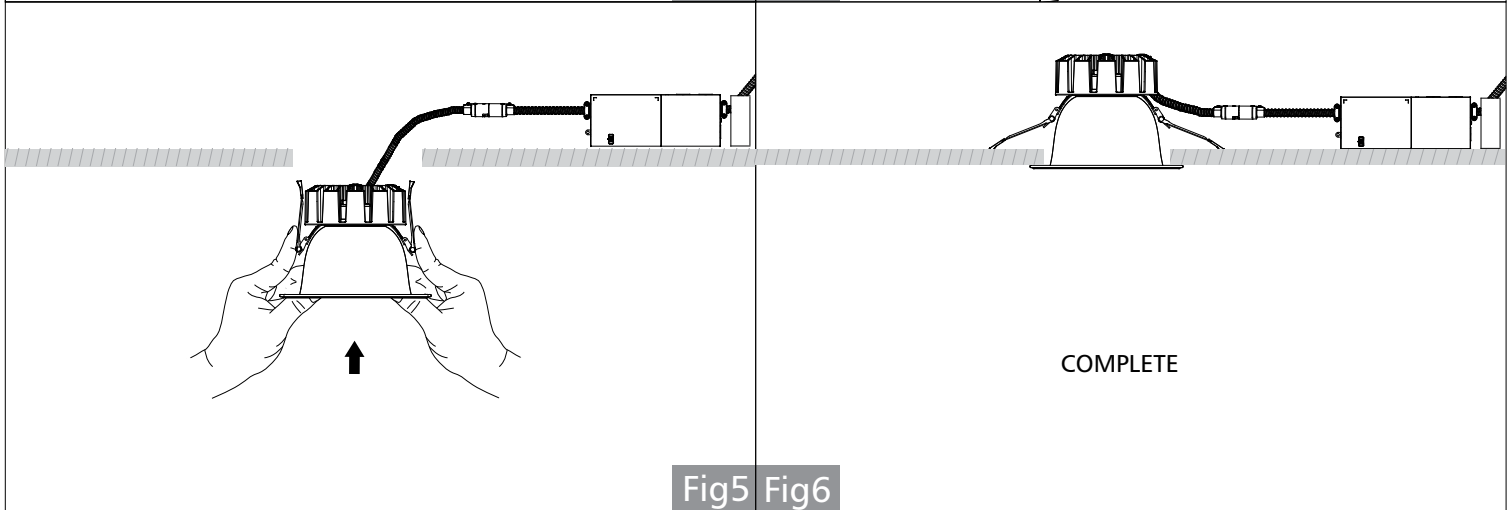
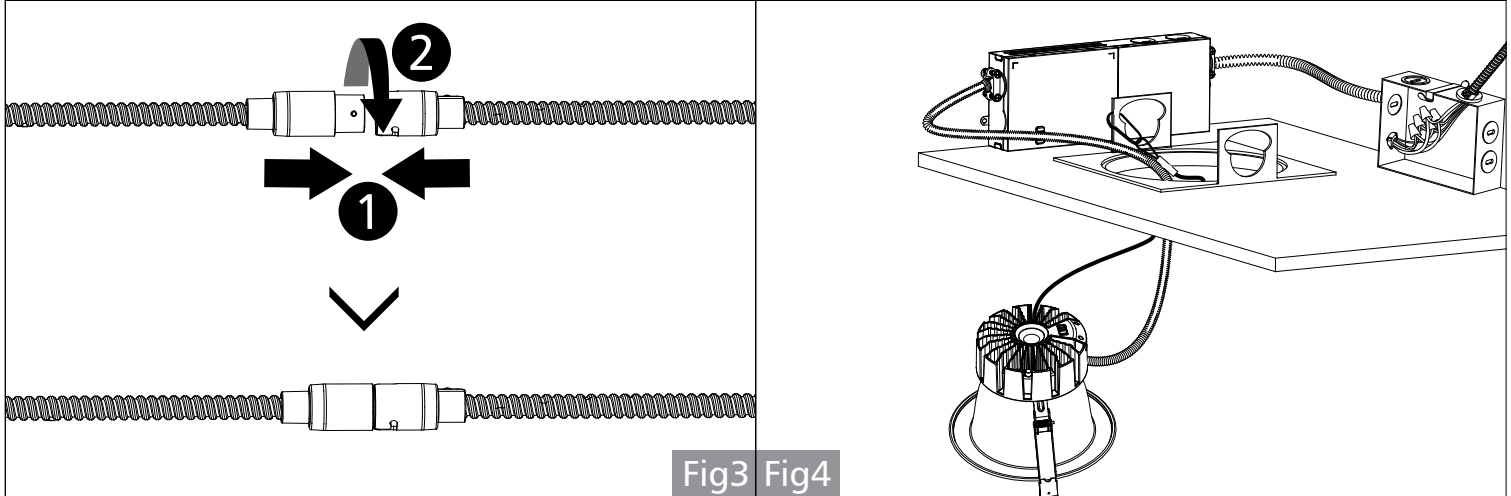
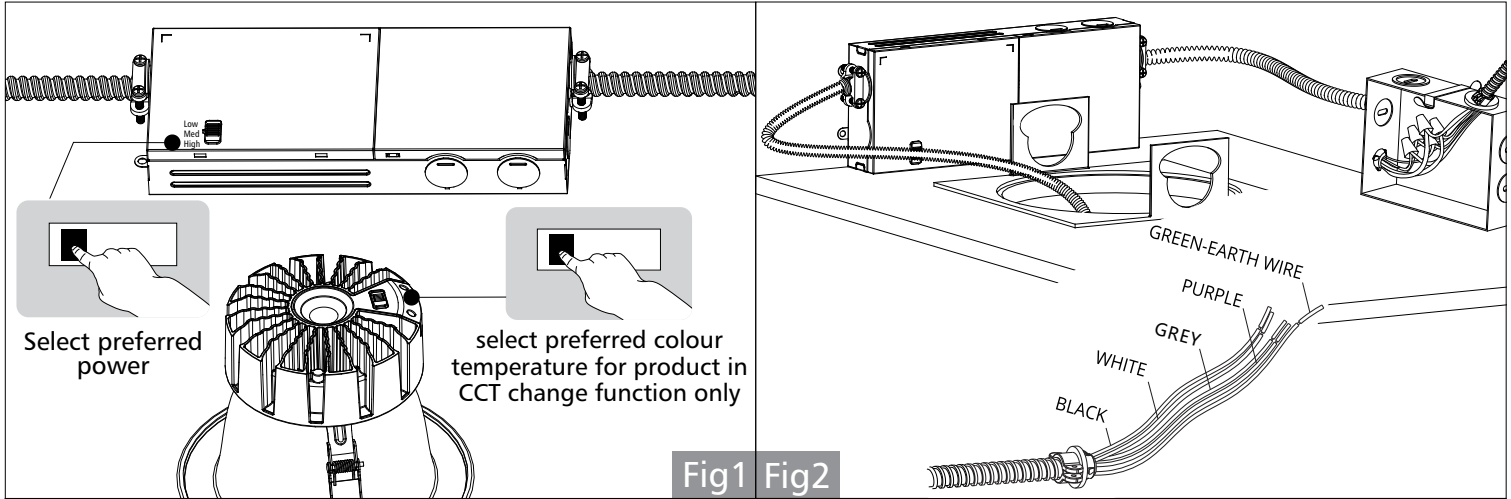
RETROFIT INSTALLATION

Ceiling Cutout Table

Downlight Dia (inch)	6"	8"
Ceiling Cutout (inch)	6-5/16"~7-1/2"	8-1/16"~9-1/2"

1. If existing lamp and trim are present, remove from ceiling or move it out of the way as it will not be needed during installation. Measure the ceiling opening to make sure the edge of the luminaire will cover the entire hole and still sit firmly in the ceiling before proceeding.
2. Open the existing J-box cover and cut away all wires connected to the ballast.
3. If using selected power driver or selected CCT luminaire, please adjust the lamp power to desired lumen output by slide switch on driver box.adjust CCT on the back of luminaire by slide switch.make sure the switch is never in between positions. (fig. 1).
- 4.Set the light engine driver box beside the housing frame. Allow it to rest on the ceiling or on the existing frame. make sure the driver is placed no farther than 1/2" from the reflector. Insert the open connection end into the existing J-box and wire to the power source (black to L, white to N, green to E). for dimming circuits, connect purple to '+' and grey to '-'. Reattach J-box cover (fig. 2).
5. Connect the driver box to the light engine by the attached quick connectors. make sure the cable collars are secure by inserting the pin into the L-shaped slot and turning until firmly in place (fig. 3).
6. Attach the safety rope to the existing fixture housing. (fig.4).
7. Squeeze the two reflectors clips so they are in an upright position and insert lamp into the ceiling. Once lamp is inside the ceiling, release the reflector clips and continue pushing lamp into the ceiling until securely fixed and flush with ceiling (fig.5&fig.6).
8. Restore power at the source and the installation is complete.

RETROFIT INSTALLATION

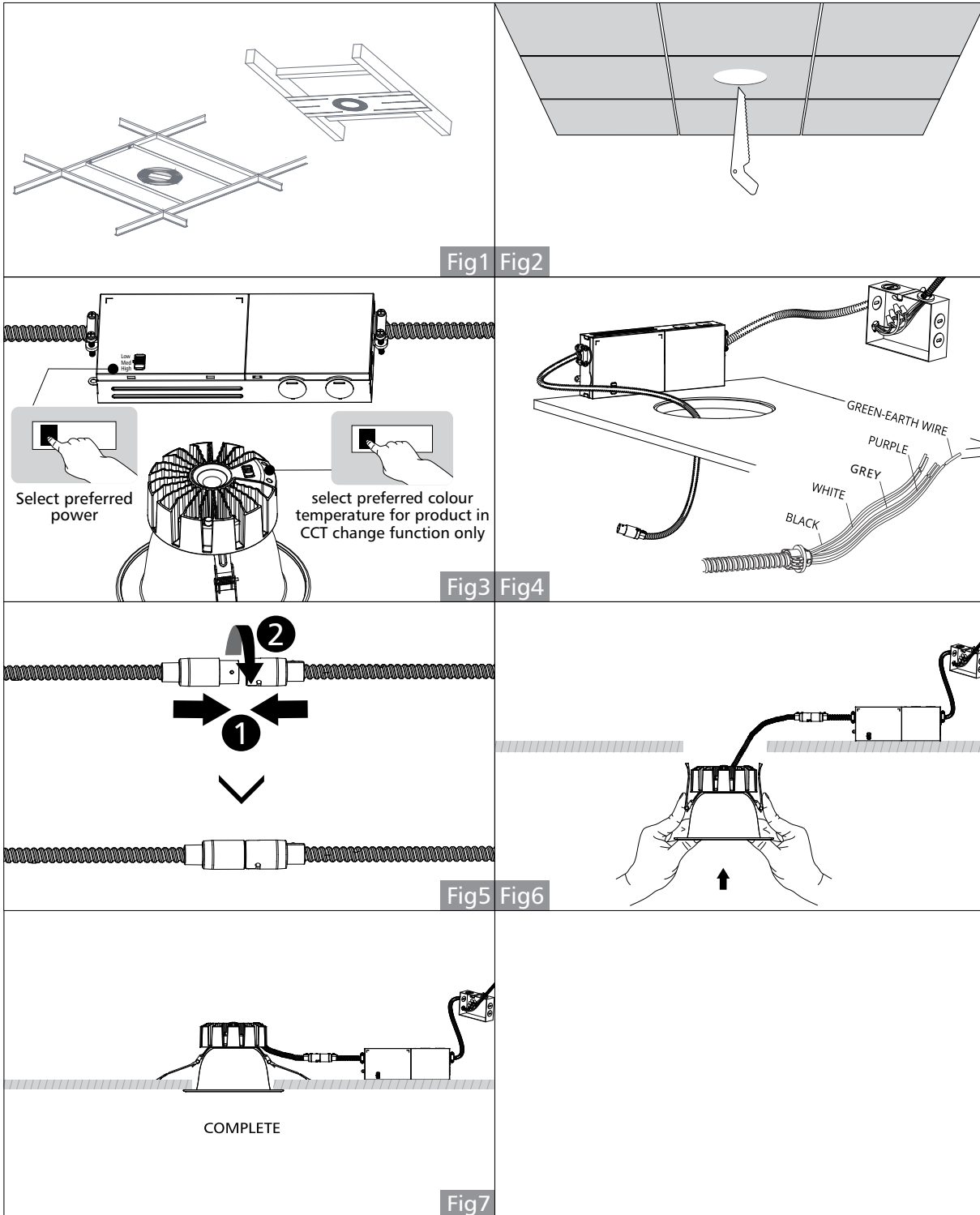


Specifications and dimensions subject to change without notice.

NEW CONSTRUCTION INSTALLATION WITH JBOX

1. If using a new construction Plate, install it in the ceiling following its own installation instruction. (fig. 1)
2. If a new hole is needed, use a hole cutter, cut along the edge of the new construction plate prepared for the desired size (fig. 2).
3. If using selected power driver or selected CCT luminaire, please adjust the lamp power to desired lumen output by slide switch on driver box. adjust CCT on the back of luminaire by slide switch. Make sure the switch is never in between positions. (fig. 3).
4. Set the light engine driver box beside the housing frame. Allow it to rest on the ceiling or on the existing frame. make sure the driver is placed no farther than 1/2" from the reflector. Insert the open connection end into the existing J-box and wire to the power source (black to L, white to N, green to E). for dimming circuits, connect purple to '+' and grey to '-'. Reattach J-box cover (fig. 4).
5. Connect the driver box to the light engine by the attached quick connectors. make sure the cable collars are secure by inserting the pin into the L-shaped slot and turning until firmly in place (fig.5).
6. Attach the safety rope to the existing fixture housing.
7. Squeeze the two reflectors clips so they are in an upright position and insert lamp into the ceiling. Once lamp is inside the ceiling, release the reflector clips and continue pushing lamp into the ceiling until securely fixed and flush with ceiling (fig.6&fig.7).
8. Restore power at the source and the installation is complete.

NEW CONSTRUCTION INSTALLATION WITH JBOX

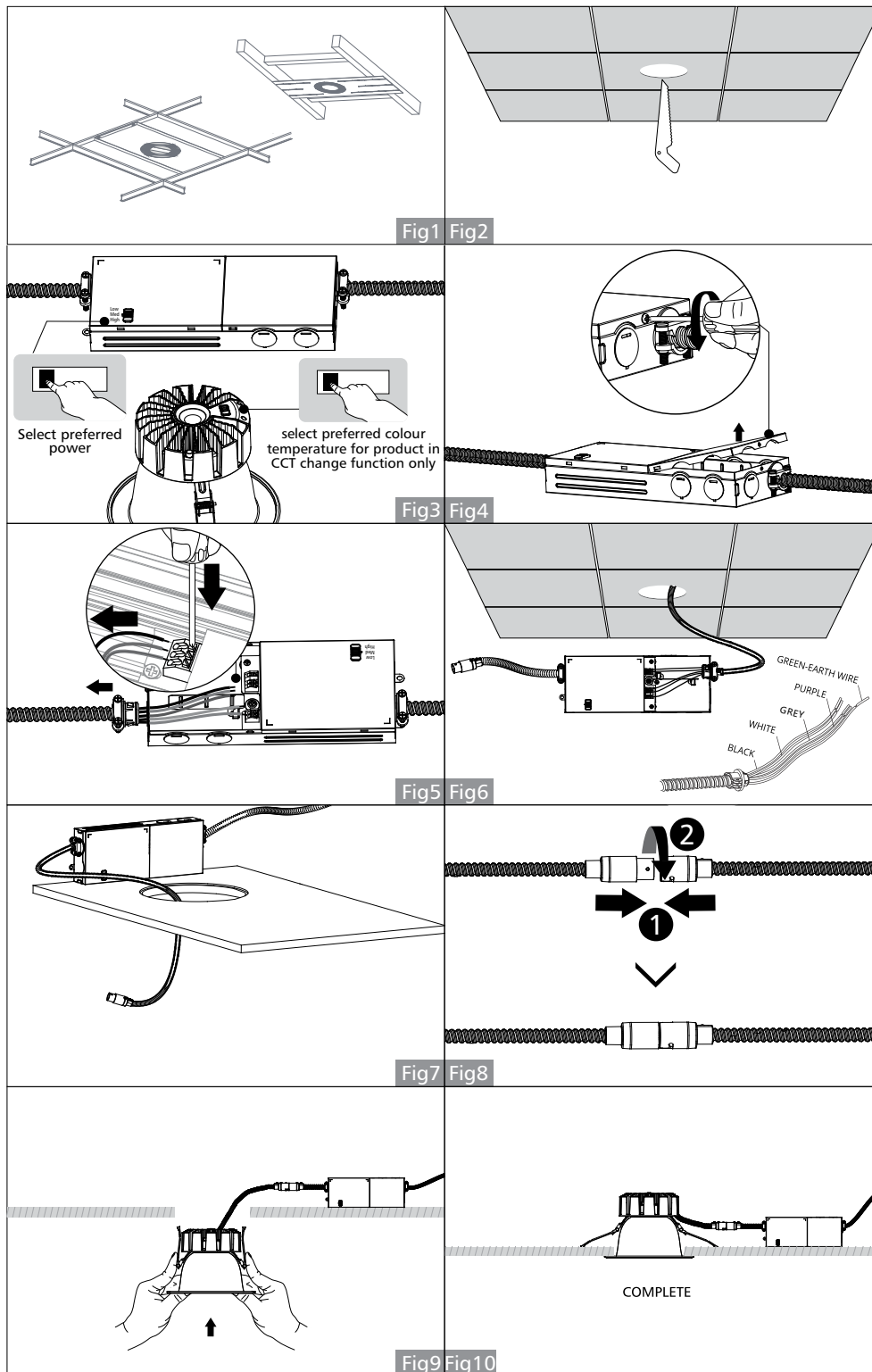


Specifications and dimensions subject to change without notice.

NEW CONSTRUCTION INSTALLATION WITH DRIVER BOX

1. If using a new Construction Plate, install it in the ceiling following its own installation instruction. (fig. 1)
2. If a new hole is needed, use a hole cutter, cut along the edge of the new construction plate prepared for the desired size (fig. 2).
3. If using selected power driver or selected CCT luminaire, please adjust the lamp power to desired lumen output by slide switch on driver box. adjust CCT on the back of luminaire by slide switch. Make sure the switch is never in between positions. (fig. 3).
4. Twist off the side screw, open the driver cover(fig.4), then press the connector and take out the black, white, green, grey and purple wires(fig.5).Through these wires into driver opening hole and connect them to the power source (black to L, white to N, green to E). For dimming circuits, connect purple to '+' and grey to '-'. Reattach J-box cover (fig. 6).
5. Set the light engine driver box beside the housing frame. Allow it to rest on the ceiling or on the existing frame. make sure the driver is placed no farther than 1/2" from the reflector(fig. 7).
6. Connect the driver box to the light engine by the attached quick connectors. Make sure the cable collars are secure by inserting the pin into the L-shaped slot and turning until firmly in place (fig.8).
7. Attach the safety rope to the existing fixture housing.
8. Squeeze the two reflectors clips so they are in an upright position and insert lamp into the ceiling. Once lamp is inside the ceiling, release the reflector clips and continue pushing lamp into the ceiling until securely fixed and flush with ceiling (fig.9 & fig.10).

NEW CONSTRUCTION INSTALLATION WITH DRIVER BOX



Specifications and dimensions subject to change without notice.

LAMPSHADE REPLACEMENT

