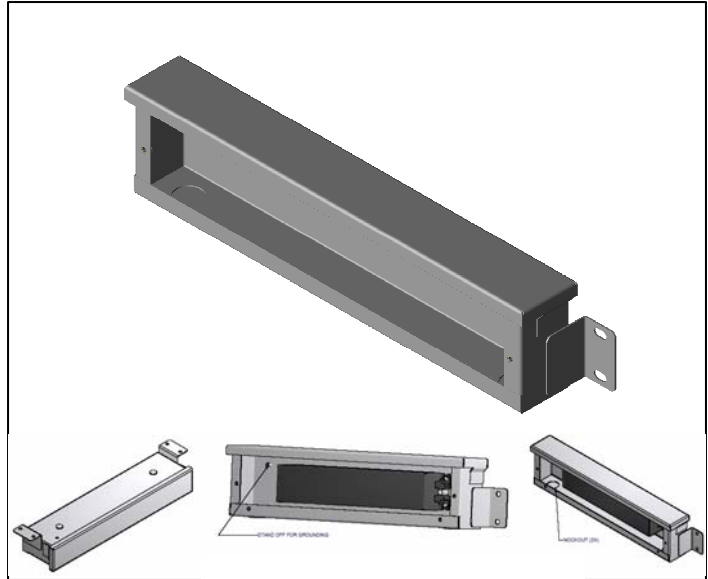


## NEMA Type 3R Enclosure



### DESIGN HIGHLIGHTS:

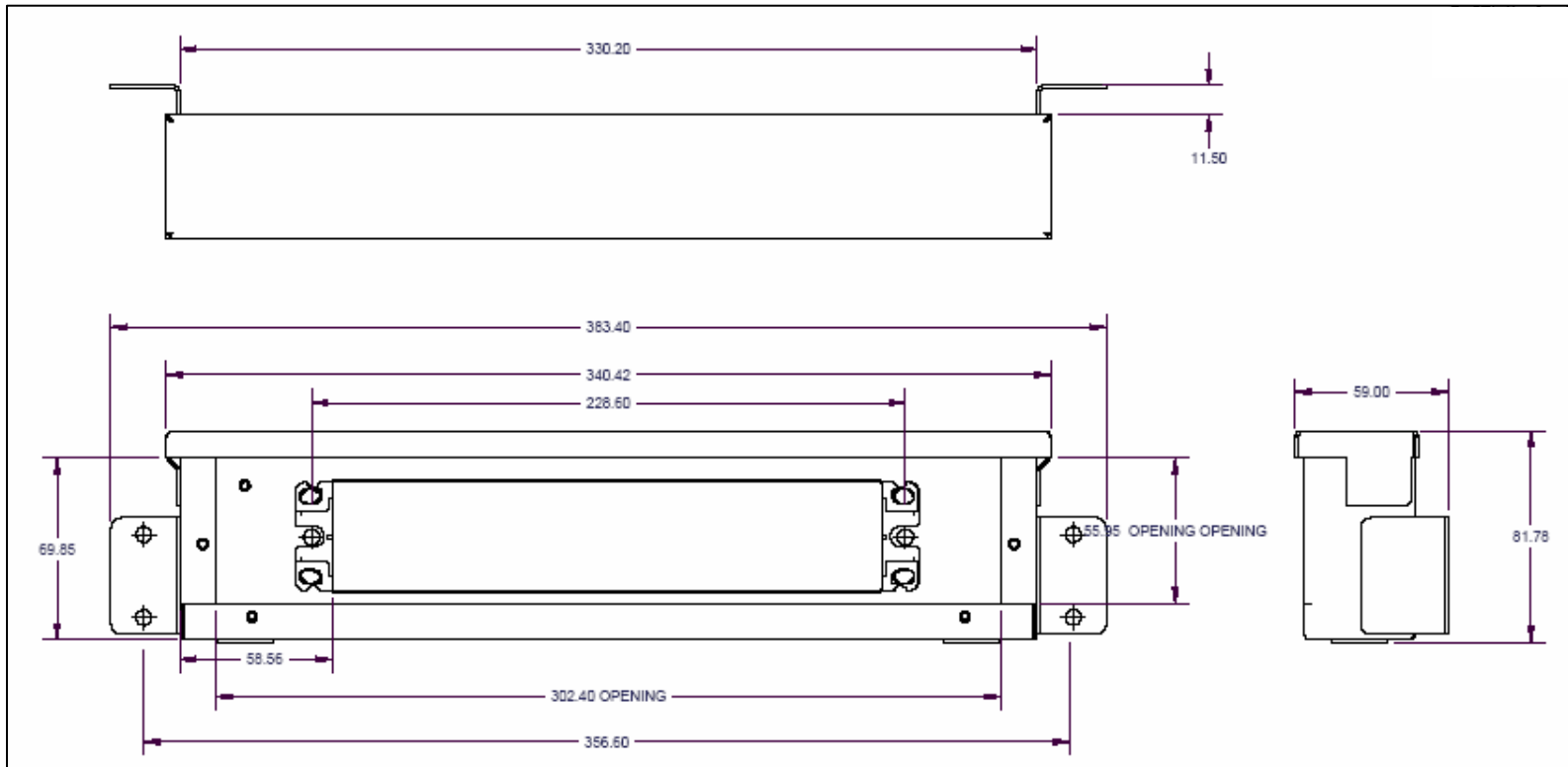
- NEMA type 3R rating
  - Meets standards UL50 Type 3R and CSA Type 3R
  - Maintains 3R rating when mounted vertically –as directed
- Construction:
  - Formed and spot welded from 18 gauge cold roll commercial quality (CRCQ) steel, G30 minimum post plating zinc, Rohs compliant
  - Drip-shield top and seam free sides, front and back
  - Slip-on removable cover fastened with a steel screws on each side
  - Mounting brackets provide a half-inch clearance off surface for protection against running water
  - Easily removed half-inch knockouts on bottom of enclosure
  - No gasket
- Finish
  - Commercial white, post-paint wet epoxy on all surfaces

### APPLICATIONS:

- Designed for use as a wiring/junction box
- Provides protection against rain, sleet, snow and dripping water

Catalog Number	Description	Application
LED1003R15X3	LED 3R Enclosure	<ul style="list-style-type: none"> <li>NEMA 3R rated Enclosure for Advance Xitanium LED Drivers LED120A0012V50F, LEDINTA0012V50FO, LED120A0024V33F and, LEDINTA0024V41FO</li> </ul>

## Dimensions (in millimeters)



## Installation requirements and Wiring considerations

- Enclosure meets NEMA3R, UL-outdoor ratings
- Enclosure must be mounted 12 inches above roof, parapet or horizontal surface
- Enclosure must be mounted in horizontal position with conduit knockouts facing down.
- Use screws (enclosed) to attach cover plate to enclosure chassis.
- Follow all NEC and local electrical codes
- Wiring used for connections must have insulation rating of 600V/105C or higher.
- Input and output wiring must run inside conduit.
- Wiring from a Class 2 output can be run without conduit as long as PLTC type cable is used.